

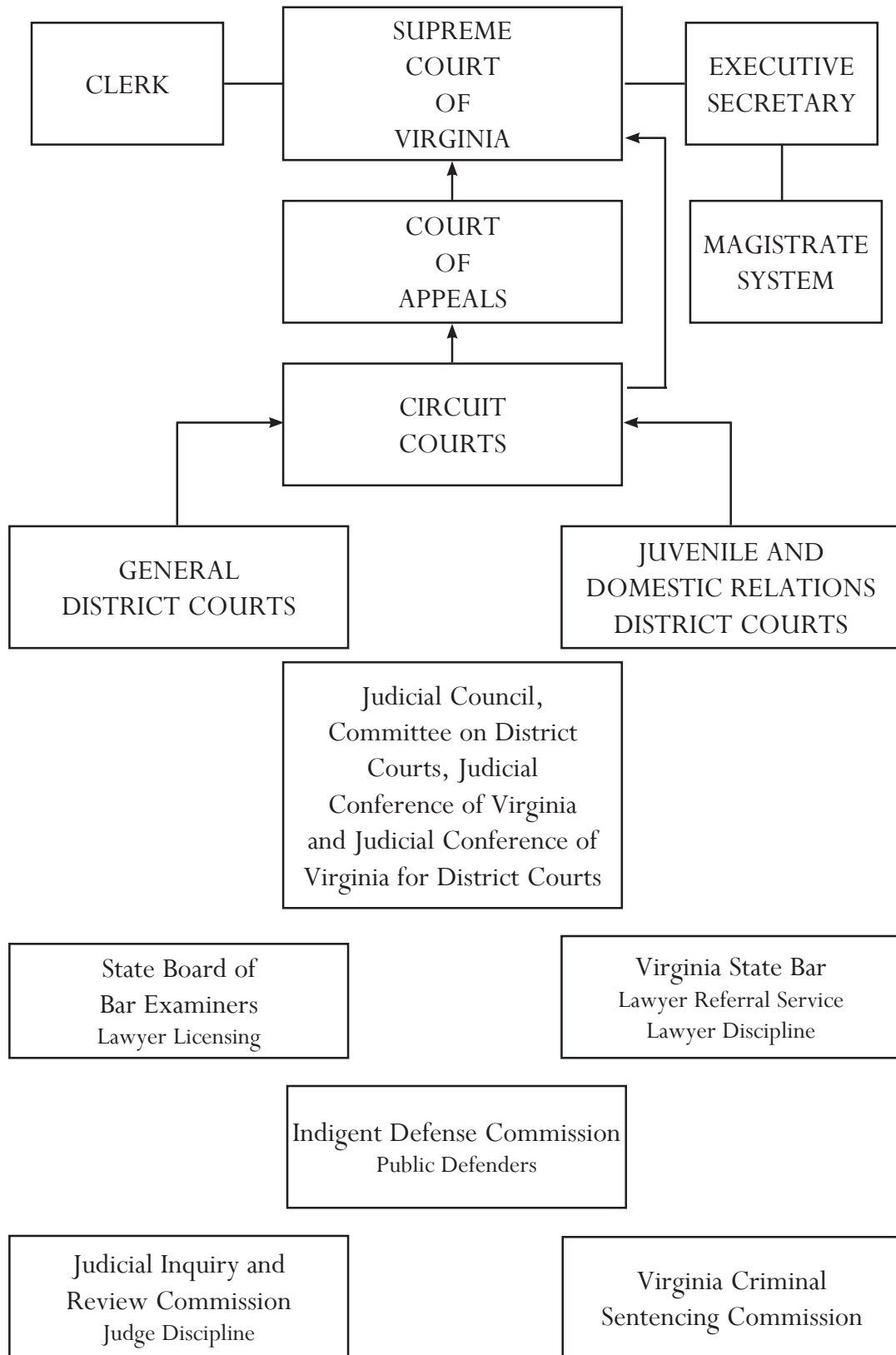


2011 The Judiciary's Year in Review

Virginia

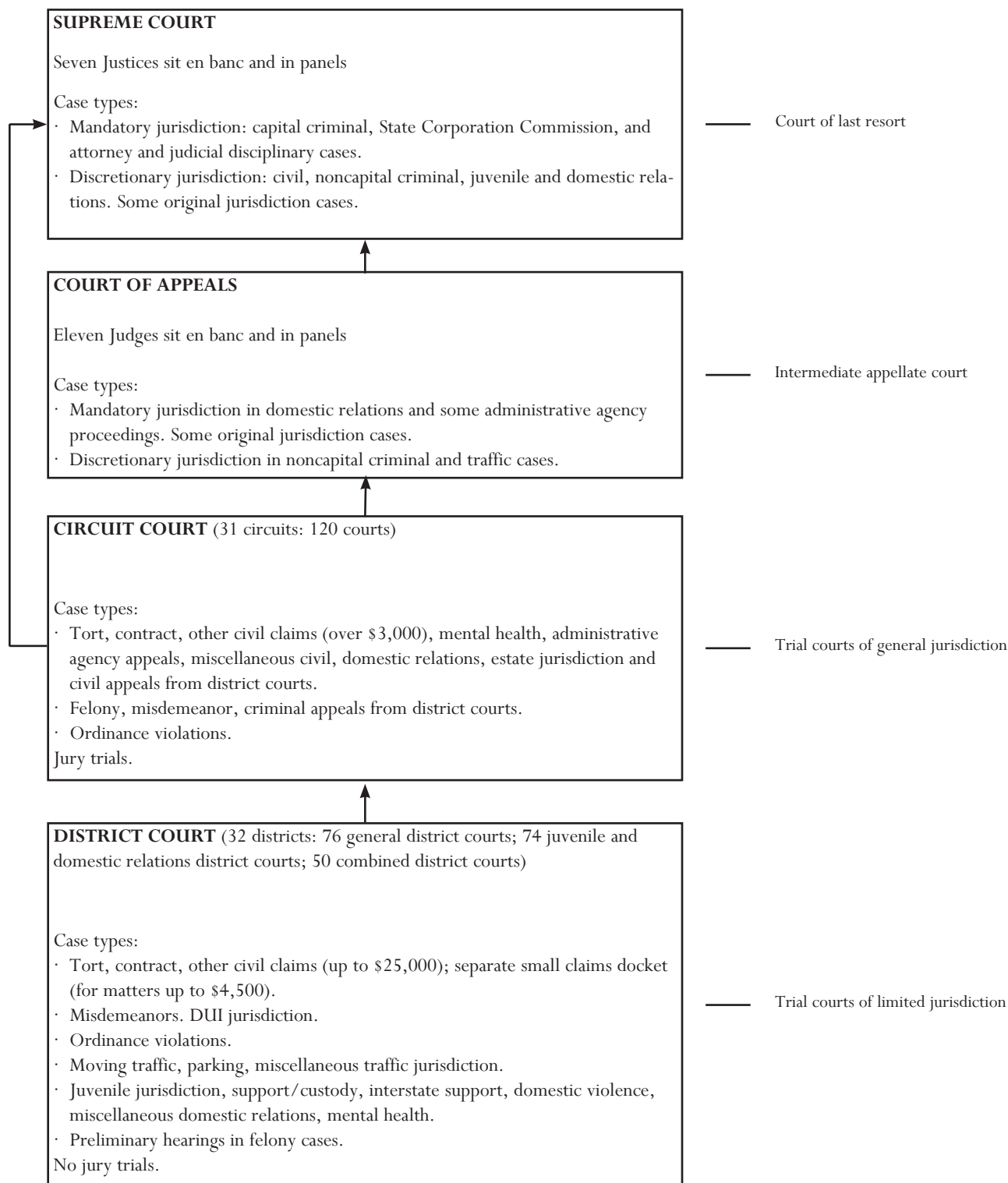
State of the Judiciary Report

VIRGINIA JUDICIAL BRANCH 2011



Route of Appeal →

VIRGINIA COURT STRUCTURE



(As of December 31, 2011)

T A B L E O F C O N T E N T S

VIRGINIA JUDICIAL BRANCH.....i
VIRGINIA COURT STRUCTUREii

THE JUDICIARY’S YEAR IN REVIEW

Part One Supreme Court of Virginia 2011A-1
Part Two Court of Appeals of Virginia 2011A-9
Part Three Circuit Courts 2011A-15
Part Four General District Courts 2011A-35
Part Five Juvenile and Domestic Relations Courts 2011A-47
Part Six Magistrates 2011A-61

LIST OF TABLES

Supreme Court of Virginia

1 Part One - 2007-2011 Annual Statistics A-3
 Part Two - Annual Statistics - Case Type Filings..... A-4
 2 Petitions for Appeal and Original Jurisdiction Petitions A-5
 3 Total Granted Cases Left to be Argued at End of Sessions and Breakdown of Cases Refused A-6
 4 Justices of the Supreme Court A-7

Court of Appeals

5 2007-2011 Annual Statistics - Part 1 A-11
 6 2007-2011 Annual Statistics - Part 2 A-12
 7 2007-2011 Petitions and Cases Disposed A-13
 8 Judges of the Court of Appeals A-14

Circuit Court

9 2001-2011 Historical Summary A-15
 10 2009-2011 Percent Changes in Commenced Cases..... A-16
 11 2001-2011 Trial Rates A-18
 12 2011 Age of Concluded Cases A-19
 13 2001-2011 Age of Concluded Civil Cases A-22
 14 2001-2011 Age of Concluded Criminal Cases A-23
 15 2011 Civil Commenced Caseload by Circuit With State Rankings A-24
 16 2011 Cases Commenced Per Judge..... A-25
 17 2011 Cases Concluded Per Judge A-26
 18 2011 Pending Cases Per Judge A-27
 19 2011 Juries Impaneled and Jury Days Per Judge A-28
 20 Judges of the Circuit Courts A-29

General District Courts

24 2009-2011 Percent Change in Caseloads A-35
 25 2001-2011 Historical Summary A-36
 26 2011 Caseload Statistics..... A-37
 27 2011 New Caseload by District With State Rankings A-39
 28 2011 New Criminal Caseload by District With State Rankings A-40
 29 2011 New Traffic Caseload by District With State Rankings A-41

LIST OF TABLES (cont.)

30 2011 New Civil Caseload by District With State Rankings A-42
 31 Judges of the General District Courts A-43

J&DR District Courts

32 2009-2011 Percent Change in Caseloads A-47
 33 2001-2011 Historical Summary A-48
 34 2011 Caseload Statistics A-50
 35 2011 New Caseload by District With State Rankings A-51
 36 2011 New Juvenile Caseload by District With State Rankings A-52
 37 2011 New Domestic Relations Caseload by District With State Rankings A-53

 38 2011 Caseload Statistics by Detailed Case Type A-54
 39 2011 Age of Concluded Cases A-55
 40 Judges of the J&DR Districts Courts A-56

Magistrate System

41 2011 Total Processes A-61
 42 2011 Processes Issued by District A-62
 43 2011 Detailed Process Data by District A-64

LIST OF DISPLAYS

Supreme Court of Virginia

1 2007-2011 Petitions Filed and Acted Upon A-2
 2 2007-2011 Appeals Granted and Refused A-2
 3 2007-2011 Cases Waiting to be Heard A-2

Court of Appeals

4 2007-2011 Cases Filed and Disposed A-9
 5 2007-2011 Criminal Petitions A-11

Circuit Courts

6 Trends in Commenced Civil Cases A-17
 7 Trends in Commenced Criminal Cases A-17
 8 2011 Percent of Civil Cases Concluded Within 12 Months of Filing A-20
 9 2011 Percent of Felony Cases Tried/Adjudicated Within 120 Days of Arrest A-21
 10 2011 Percent of Misdemeanor Cases Tried/Adjudicated Within 60 Days of Arrest/Filing A-21

General District Courts

11 Trends in New Cases A-36
 12 1985-2011 New and Concluded Cases Per Judge A-38

T A B L E O F C O N T E N T S

LIST OF DISPLAYS (cont.)

J&DR District Courts

13 Trends in New Cases A-48
14 1985-2011 New and Concluded Cases Per Judge..... A-49

Magistrate System

15 2011 Distribution of Processes A-61
16 2011 Total Processes by District in Rank Order A-63
17 Magistrate System Organizational Chart..... A-70
18 Map of Magistrate Regions A-71

DID YOU FIND WHAT YOU WERE LOOKING FOR?

There are many other detailed reports located on the court's website: www.courts.state.va.us.



2011 The Judiciary's Year in Review

Virginia

Supreme Court of Virginia

SUPREME COURT OF VIRGINIA

Jurisdiction and Structure

The Supreme Court of Virginia, which sits in Richmond and is composed of seven Justices, concluded its two hundred and thirty-second year of operation in 2011. The Chief Justice of the Supreme Court is elected by a majority of the Court's Justices and serves a four-year term. The Court meets for five-day sessions beginning in September of each year and every seventh week until completion of the June docket. There are no formal sessions of court during July and August.

The Court's original jurisdiction may be invoked by way of petition for habeas corpus, mandamus, or prohibition. Appellate jurisdiction is invoked by appeal or writ of error attacking the judgment of a trial court. The Court hears appeals from the circuit courts involving civil cases (excluding domestic relations cases), criminal cases in which a sentence of death has been imposed, habeas appeals, and appeals from the State Corporation Commission.

Additionally, the Supreme Court is empowered to deal with matters concerning judicial censure, retirement, and removal. Subject to some statutory limitations, cases decided by the Court of Appeals may be appealed to the Supreme Court. The Supreme Court may, on its own motion or that of the Court of Appeals, certify a case originally appealed to the Court of Appeals for review by the Supreme Court before it has been determined by the Court of Appeals.

During the recess periods between sessions of the Court, the Justices conduct extensive legal research upon cases awaiting decision, draft and review opinions, study cases in which petitions for appeal have been filed, conduct hearings on petitions for appeal, and attend to administrative duties.

In addition to its appellate functions of examining results reached in lower courts and of redefining and developing the body of state law, the Supreme Court is also authorized to adopt rules of practice and procedure and to oversee changes in the organization of lower courts. The Supreme Court is responsible for the general supervision of the entire Virginia Judicial System.

Review of 2010 Caseload Activity

In 2011, the number of filings in the Supreme Court of Virginia totaled 2,333, which was 152 cases less than recorded in 2010. In 2011, criminal cases decreased by 198 petitions or 15.0%. Civil filings decreased by 24 or 3.8%. See Table 1-Part Two. There were 17 petitions withdrawn before being

acted upon in 2011. A total of 427 petitions for rehearing were filed with the Court during the year, down from 436 the previous year. A total of 419 of such petitions were decided: 401 refused, 1 withdrawn, and 17 granted. The Court qualified 1,421 local attorneys and 109 corporate attorneys and licensed and qualified 42 foreign attorneys in 2011. In addition, 18 attorneys were appointed to represent indigents, and 177 orders were entered by the Court to show cause or respond. See Table 1 - Part One.

During the year, 152 petitions for appeal were granted, the majority of which (101 or 66.4%) were civil in nature: 98 civil petitions and 3 civil petitions granted from the Court of Appeals (CAV). Also among those petitions granted were 31 criminal petitions from the CAV, but there were no cases certified from the CAV. The Court refused 1,872 petitions for appeal in 2011, including 1,120 criminal petitions refused from the Court of Appeals (59.8% of the total refused) and 341 civil petitions (18.2% of the total refused). There were 286 petitions refused for procedural reasons compared to 244 in 2010. The total number of appeals granted and/or refused decreased 5.4% in 2011 to 2,024 a decrease of 116 cases from 2010. See Table 2.

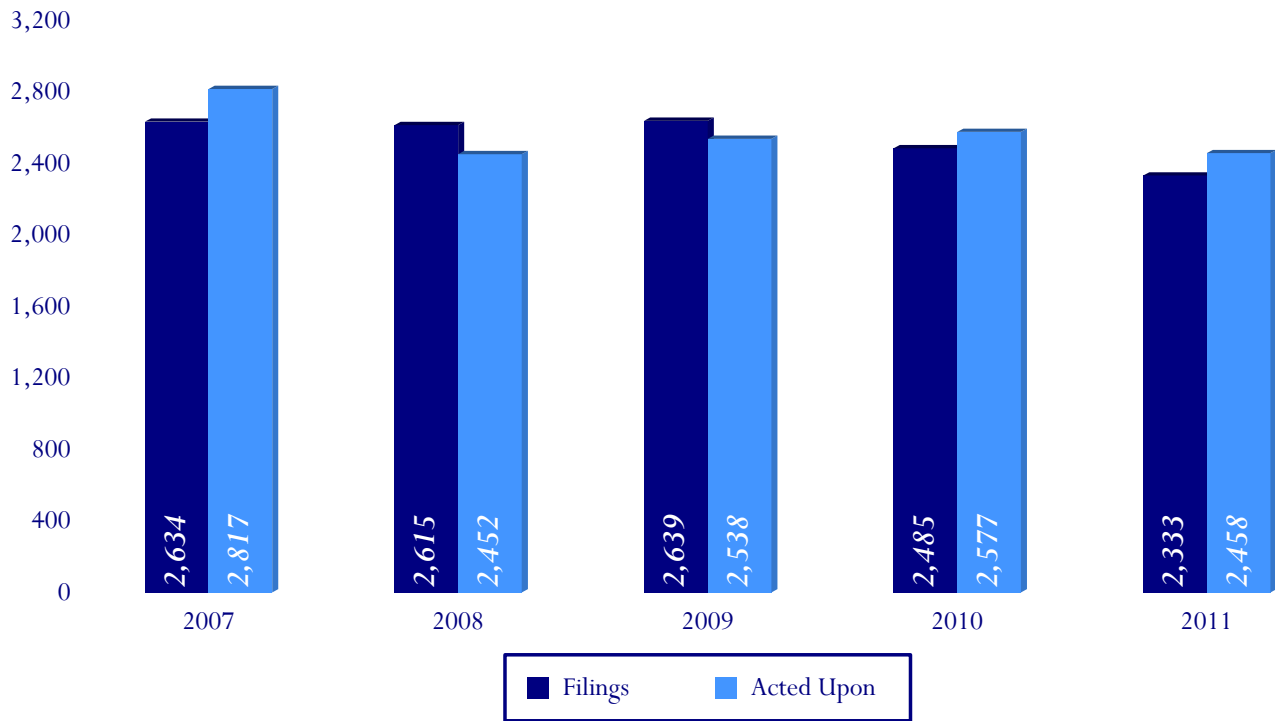
Of the original jurisdiction petitions, the Court awarded 27 in 2011, down from 35 the year before. The Court refused 406 original jurisdiction petitions during the year, 324 or 79.8% of which were matters involving habeas corpus. There were also 69 writs of mandamus refused. The total number of original jurisdiction petitions docketed, awarded, and refused was 434, a decline of 0.7% from 437 in 2010. The total number of cases acted on decreased in 2011, from 2,577 to 2,458. See Table 2.

There were 119 cases decided by opinion in 2011 while another 76 cases were decided by orders. In 63 or 52.9% of the cases decided by opinion, the judgment of the lower court was affirmed. The number of opinions in which judgments were reversed or remanded in 2011 totaled 53 or 44.5% of the cases decided by opinion.

The number of cases waiting to be argued before the Supreme Court stood at 92 at the end of the year, down 35 cases from 2010's year-end total of 127. See Table 3. The goal of the Supreme Court is to dispose of all cases within 12 months of the filing of the petition for appeal.

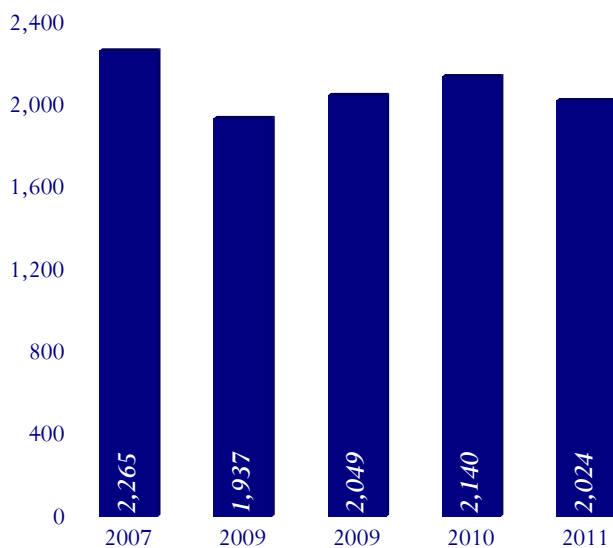
Display 1

Supreme Court of Virginia
2007-2011 Petitions Filed and Acted Upon



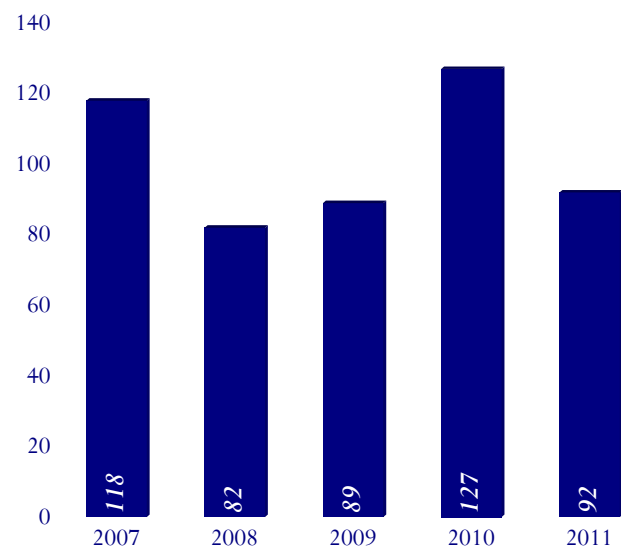
Display 2

Supreme Court of Virginia
2007-2011 Appeals Granted and Refused



Display 3

Supreme Court of Virginia
2007-2011 Cases Waiting to be Heard



S U P R E M E C O U R T O F V I R G I N I A

Table 1 - Part One
Supreme Court of Virginia
2007-2011 Annual Statistics

	2007	2008	2009	2010	2011
Petitions withdrawn before being acted upon	28	23	24	26	17
Petitions for appeal rejected for no filing fee or for late filing fee	0	0	0	0	0
Petitions for appeal rejected for other than no filing fee or late filing fee	9	14	7	5	4
Injunction Petitions (8.01-626) Refused	7	6	2	5	4
Injunction Petitions (8.01-626) Granted	5	2	2	4	3
Injunction Petitions (8.01-626) dismissed procedural	0	1	1	1	4
Cases transferred to the Court of Appeals	1	3	1	3	6
Cases decided by opinions	130	124	114	117	119
Number of opinions in which judgments were affirmed	59	54	50	65	63
Number of opinions in which judgments were reversed	66	70	51	50	53
Number of appeals dismissed	1	0	2	1	2
Number of memorandum opinions	0	0	1	0	0
Number of opinions in original jurisdiction cases	4	0	3	1	0
Certified Questions of Law (Total)	0	0	0	0	1
Answered in the Negative	0	0	0	0	0
Answered in the Affirmative	0	0	0	0	1
Number of cases decided by orders*	69	81	64	59	76
Rehearings filed	390	364	440	436	427
Rehearings decided	358	367	439	449	419
Rehearings granted	13	23	12	22	17
Rehearings refused	343	344	423	427	401
Rehearings withdrawn	1	0	4	0	1
Local attorneys qualified	1,351	384	1,299	1,410	1,421
Foreign attorneys licensed and qualified	78	49	60	61	42
Patent attorneys	0	0	0	0	0
Corporate attorneys qualified	129	163	129	113	109
Attorneys appointed by this Court to represent indigents	20	19	29	29	18
Military	-	-	-	2	0
Rule to show cause (appeals)	-	-	-	91	-
Orders entered to show cause or respond	223	247	199	144	177
Granted cases placed in suspense	0	0	0	1	0
Review of Virginia Board of Bar Examiners Decisions	5	2	1	1	0
Granted	0	0	0	1	0
Refused	5	2	1	0	0
Delayed Appeals permitted	113	87	73	83	70
Extensions of time acted on	232	232	228	258	261
Orders ruling on motions/requests other than extensions of time	402	411	392	441	433
Orders establishing due date in transfer cases	61	69	76	66	68
Records returned to trial courts (no petition filed)	246	263	232	227	224

*Includes appeals awarded and cases remanded, Writs of Habeas Corpus awarded and made returnable to trial courts, cases dismissed and cases settled.

Table 1 - Part Two
Supreme Court of Virginia
Annual Statistics - Case Type Filings

	2010	2011	Change	Percent Change
State Corporation Commission	9	2	-7	-77.8%
Civil	624	600	-24	-3.8%
Workers Compensation	9	16	7	77.8%
Certified Questions of Law	-	6	6	-
Criminal	1,318	1,120	-198	-15.0%
Disciplinary Board	2	4	2	100.0%
Disciplinary Court	5	3	-2	-40.0%
Death Penalty	1	3	2	200.0%
Habeas Corpus	113	119	6	5.3%
Writ of Habeas Corpus	308	358	50	16.2%
Writ of Mandamus	72	76	4	5.6%
Writ of Prohibition	1	6	5	500.0%
Commonwealth Appeals	4	3	-1	-25.0%
Actual Innocence	5	4	-1	-20.0%
Interlocutory Appeals	3	-	-3	-100.0%
Injunctions	11	13	2	18.2%
Other	-	-	0	0.0%
Totals	2,485	2,333	-152	-6.1%

S U P R E M E C O U R T O F V I R G I N I A

Table 2

Supreme Court of Virginia

Petitions for Appeal and Original Jurisdiction Petitions

	2007	2008	2009	2010	2011
Appeal Petitions					
GRANTED					
Appeals of Right	9	8	14	14	11
Civil Granted	128	100	108	142	98
Civil Granted from CAV	5	8	4	10	3
Criminal Granted	0	1	0	0	0
Criminal Granted from CAV	61	49	56	49	31
Habeas Appeals Granted	4	2	4	2	5
Cases Certified from CAV	1	1	1	1	0
Certified Questions of Law Accepted	0	0	0	0	4
Remanded from U.S. Supreme Court	0	1	0	3	0
Total	208	170	187	221	152
REFUSED					
Civil Refused	340	308	304	311	341
Civil Dismissed (Procedural)	108	102	117	138	138
Civil Refused from CAV	29	35	35	38	41
Civil Dismissed from CAV (Procedural)	14	15	22	21	17
Criminal Refused	0	0	0	0	0
Criminal Refused from CAV	1,382	1,150	1,207	1,249	1,120
Criminal Dismissed (Procedural)	1	0	1	0	0
Criminal Dismissed from CAV (Procedural)	91	62	69	62	89
Habeas Appeals Refused	58	65	67	76	83
Habeas Appeals Dismissed (Procedural)	34	29	40	23	42
Habeas Appeals Refused from CAV	0	0	0	1	0
Certified Questions of Law Rejected	0	1	0	0	1
Total	2,057	1,767	1,862	1,919	1,872
Total Appeals Granted and Refused	2,265	1,937	2,049	2,140	2,024
Original Jurisdiction Petitions					
DOCKETED					
	0	0	4	1	1
AWARDED					
Writ of Habeas Corpus	37	29	24	35	25
Writ of Mandamus	0	0	0	0	0
Writ of Prohibition	0	0	0	0	0
Writ of Actual Innocence	0	0	1	0	2
Total	37	29	25	35	27
REFUSED					
Writ of Habeas Corpus	278	281	245	225	227
Writ of Habeas Corpus (Procedural)	93	89	109	91	97
Writ of Mandamus	132	98	95	81	69
Writ of Prohibition	10	16	10	1	8
Writ of Actual Innocence	2	2	1	3	5
Total	515	486	460	401	406
Total Original Jurisdiction Docketed, Awarded and Refused	552	515	489	437	434
SUMMARY					
Grand Total of Cases Acted On	2,817	1,937	2,538	2,577	2,458
Total Petitions Filed Annually	2,632	2,615	2,639	2,485	2,333

Table 3

Supreme Court of Virginia

Total Granted Cases Left to be Argued at End of Sessions

Session	2007	2008	2009	2010	2011
January	90	91	80	80	115
March	96	91	71	96	103
April	99	83	86	109	102
June	96	84	111	133	110
September	97	81	93	127	101
November	118	82	89	127	92

Accumulated Monthly Totals of Cases Filed

Session	2007	2008	2009	2010	2011
January	263	262	241	227	201
February	432	445	416	402	393
March	674	632	653	646	652
April	915	846	902	855	824
May	1,193	1,064	1,128	1,052	1,029
June	1,411	1,266	1,339	1,297	1,246
July	1,628	1,508	1,596	1,515	1,421
August	1,831	1,749	1,807	1,695	1,620
September	1,998	1,948	2,020	1,884	1,780
October	2,255	2,158	2,216	2,101	1,958
November	2,463	2,342	2,427	2,278	2,166
December	2,634	2,613	2,639	2,485	2,133

Table 4

JUSTICES OF THE SUPREME COURT OF VIRGINIA

As of December 31, 2011

	Date Commenced	Present Term
Cynthia D. Kinser, Chief Justice	7/1/1997	2/1/2010-1/31/2022
Donald W. Lemons	3/16/2000	3/16/2000-3/15/2012
S. Bernard Goodwyn	10/10/2007	2/1/2008-1/31/2020
LeRoy F. Millette Jr.	8/18/2008	2/1/2009-1/31/2021
William C. Mims	4/1/2010	4/1/2010-3/31/2022
Elizabeth A. McClanahan	8/1/2011	8/1/2011-7/31/2023
Cleo E. Powell	8/1/2011	8/1/2011-7/31/2023

SENIOR JUSTICES OF THE SUPREME COURT OF VIRGINIA

As of December 31, 2011

Harry L. Carrico
Charles S. Russell
Elizabeth B. Lacy
Lawrence L. Koontz, Jr.

CLERK OF THE SUPREME COURT OF VIRGINIA

Patricia L. Harrington

EXECUTIVE SECRETARY

Karl R. Hade



2011 The Judiciary's Year in Review

Virginia
Court of Appeals

COURT OF APPEALS

Jurisdiction of the Court

The Court of Appeals of Virginia was established in 1985 and is composed of 11 judges who sit in panels of three in various regions of the state. The Chief Judge of the Court of Appeals is elected by a majority of the Court’s judges and serves a four-year term.

The Court of Appeals sits in various regional locations in order to provide convenient access to Virginia’s citizens. These locations are normally in Alexandria, Norfolk, Richmond, and Salem. The clerk of the Court of Appeals is headquartered in Richmond and receives, processes, and maintains permanent records of appeals and other official documents filed with the Court.

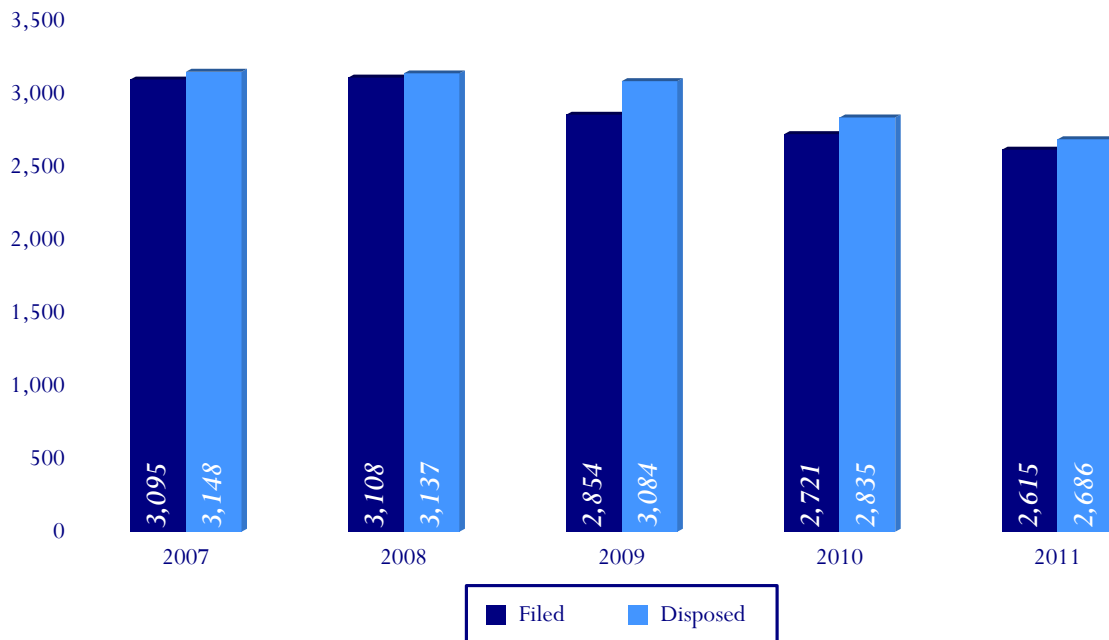
The Court of Appeals hears appeals from circuit courts in all criminal matters except death penalty cases and in all domestic relations matters. In addition, appeals from decisions of the Virginia Workers’ Compensation Commission and from most administrative agencies are taken to the Court. The Court also has original jurisdiction to issue writs of mandamus, prohibition, and habeas corpus in any case over which the Court would have appellate jurisdiction. The Court has authority to hear appeals as a matter of right from:

- any final judgment, order, or decree of a circuit court involving affirmance or annulment of a marriage, divorce, custody, spousal or child support, or control or disposition of a child, as well as other domestic relations cases;
- any final decision of the Virginia Workers’ Compensation Commission (a state agency responsible for handling workers’ compensation claims);
- any final decision of a circuit court on appeal from a decision of an administrative agency (example: the Department of Health); and
- any interlocutory order granting, dissolving, or denying an injunction or adjudicating the principles of a cause in any of the cases listed above.

The Court of Appeals also has authority to consider petitions for appeal from:

- final orders of conviction in criminal and traffic matters except where a death penalty is imposed;
- final decisions of a circuit court on an application for a concealed weapons permit; and
- certain preliminary rulings in felony cases when requested by the Commonwealth.

Display 4
Court of Appeals of Virginia
2007-2011 Cases Filed and Disposed



Review of 2011 Caseload Activity

In 2011, the Court of Appeals recorded 2,615 case filings, 106 less than the 2,721 in 2010. This decrease in filings was due to a decrease in criminal petitions by 6.8% and a increase in appeals of right by 8.4%. See Table 5 and 6.

The majority of filings in 2011 (73.8%) consisted of 1,931 criminal petitions (not including contempt). This was 140 less than the number reported the previous year. The number of petitions involving the Workers' Compensation Commission totaled 176, and there were 279 domestic relations petitions filed during the year. This number of domestic relations appeals was 50 (or 21.8%) more than in 2010.

Final dispositions totaled 2,686 in 2011, 149 less than the year before. This decrease in dispositions was due to a increase of 61 in non-criminal dispositions and a decrease of 210 in criminal dispositions compared to the decrease in criminal dispositions in 2010 of 207. Criminal dispositions totaled 2,020, and non-criminal dispositions stood at 666. Of the total dispositions in 2011, 75.2% were criminal in nature.

In disposing of the appeals coming before it, the Court in 2011 issued 88 published opinions and 327 unpublished opinions. There were 391 appeals disposed of through orders. The number of published opinions represented a decrease of 8.3% from what was reported the previous year, while the number of unpublished opinions represented a decrease of 78 or 19.3%.

During the year, there were 1,190 cases appealed to the Supreme Court of Virginia from the Court of Appeals, 199 less than in 2010. See Table 5.

Of the 2,024 criminal petitions disposed, 177 or 8.7% were granted. This compares with 9.3% of criminal petitions granted in 2010. See Tables 6 and 7. There were 21 pre-trial petitions filed by the Commonwealth and 40 original jurisdiction petitions filed during the year. The original jurisdiction petitions filed consisted of 7 habeas corpus petitions, 14 writs of mandamus or prohibition, and 23 writs of actual innocence. There were 50 original jurisdiction petitions disposed of in 2011.

Appeals of right totaled 618 for the year and included, as mentioned above, 176 appeals from the

Workers' Compensation Commission and 279 domestic relations appeals. There were also 31 administrative agency appeals, as well as 123 appeals over which the Court did not have jurisdiction and were candidates for transfer to the Supreme Court. In addition, there were 9 appeals filed during the year regarding concealed weapon permit applications or civil contempt. See Table 6.

Of the 415 appeals decided by opinion, 414 (82.6%) were affirmed, 51 (12.3%) were reversed, 19 (4.6%) were affirmed in part, reversed in part, and 5 (1.2%) were dismissed. There were 391 appeals decided by order in 2011 compared to 335 the previous year. Of these, 186 (47.6%) were dismissed, 76 (19.4%) were withdrawn or settled, 14 (3.6%) were reversed, and 17 (4.3%) cases were affirmed. In addition, 98 (24.7%) were modified, transferred, voided, or certified by the court. See Table 7.

Display 5

Court of Appeals of Virginia

2007-2011 Criminal Petitions

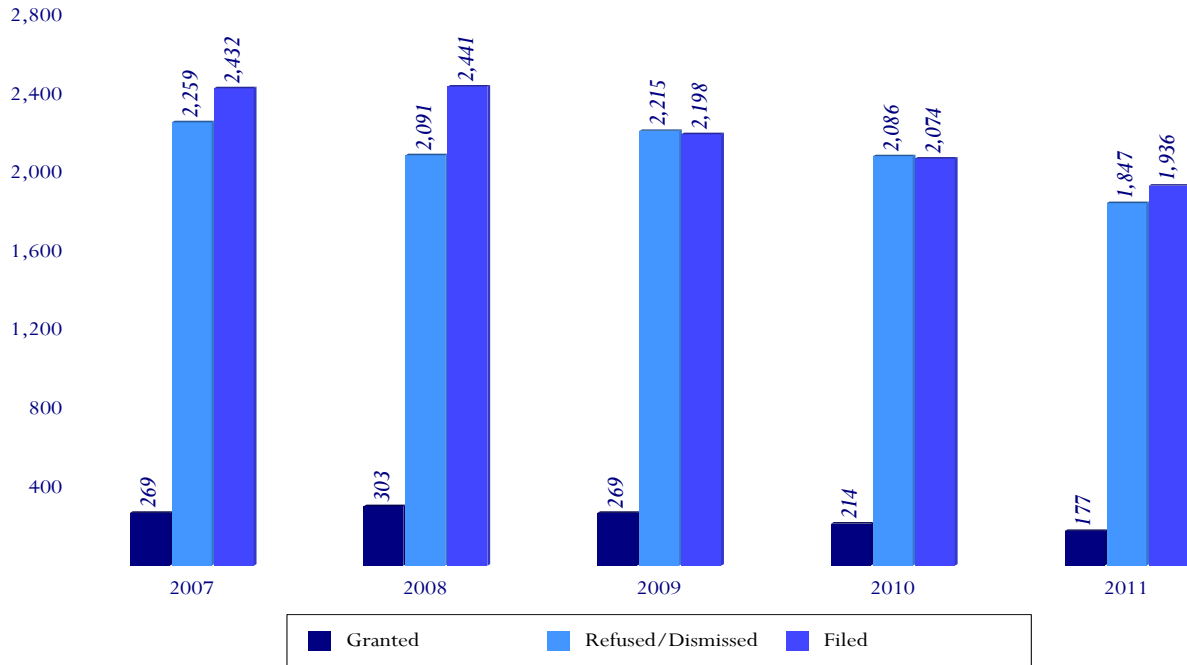


Table 5

Court of Appeals of Virginia

2007-2011 Annual Statistics - Part 1

	2007	2008	2009	2010	2011
Cases Filed					
Criminal Petitions*	2,428	2,437	2,193	2,071	1,931
Domestic Relations	275	256	253	229	279
Workers' Compensation Commission	164	183	155	172	176
Administrative Agency	38	32	39	33	31
Original Jurisdiction	36	27	50	52	40
No Jurisdiction**	91	137	123	129	123
Other***	63	36	41	35	35
Total	3,095	3,108	2,854	2,721	2,615
Final Dispositions					
Non-Criminal	660	672	647	605	666
Criminal	2,488	2,465	2,437	2,230	2,020
Total	3,148	3,137	3,084	2,835	2,686
Disposition of Appeals					
Published Opinions	106	118	122	96	88
Unpublished Opinions	383	442	443	405	327
Orders	387	386	346	338	391
Total	876	946	911	839	806
Cases Appealed to the Supreme Court of Virginia	1,419	1,430	1,431	1,389	1,190

*Does not include contempt.

**These are cases over which the Court of Appeals does not have jurisdiction and which are candidates for transfer to the Supreme Court of Virginia, pursuant to Code §8.01-677.1. Prior to 1995, these cases were counted under the "Administrative Agency" category.

***Includes concealed weapon permit applications, appeals by the Commonwealth before the end of trials, and contempt.

Table 6
Court of Appeals of Virginia
2007-2011 Annual Statistics - Part 2

	2007	2008	2009	2010	2011
Criminal Petitions					
Filed	2,432	2,441	2,198	2,074	1,936
Granted	269	303	269	214	177
Refused/Dismissed/Other	2,259	2,091	2,215	2,086	1,847
% Granted	10.6	12.7	10.8	9.3	8.8
Pre-Trial Petitions Filed by Commonwealth					
Filed	40	22	27	25	21
Granted	23	12	11	11	9
Refused/Dismissed/Other	17	15	14	14	14
Original Jurisdiction					
Filed					
Habeas Corpus	2	2	6	13	7
Mandamus/Prohibition	8	10	18	17	14
Actual Innocence*	26	15	26	22	19
Total	36	27	50	52	40
Disposed					
Habeas Corpus	3	4	3	15	8
Mandamus/Prohibition	8	8	17	17	19
Actual Innocence*	29	17	23	22	23
Total	40	29	43	54	50
Appeals of Right					
Filed					
Domestic Relations	275	256	253	229	279
Workers' Compensation Commission	164	183	155	172	176
Administrative Agency	38	32	39	33	31
No Jurisdiction**	91	137	123	129	123
Other***	17	10	9	7	9
Total	585	618	579	570	618
Total Cases Filed	3,095	3,108	2,854	2,721	2,615
Total Petitions Refused and Cases Disposed	3,148	3,137	3,084	2,835	2,686

*As of July 1, 2005, the Court of Appeals had jurisdiction over writs of actual innocence concerning non-biological evidentiary matters.

**These are cases over which the Court of Appeals does not have jurisdiction and which are candidates for transfer to the Supreme Court of Virginia, pursuant to Code § 8.01-677.1. Prior to 1995, these cases were counted under the "Administrative Agency" category.

***Includes concealed weapon permit applications and civil contempt.

C O U R T O F A P P E A L S O F V I R G I N I A

Table 7

Court of Appeals of Virginia
2007-2011 Petitions and Cases Disposed

	2007	2008	2009	2010	2011
Criminal Petitions					
Granted	269	303	269	214	177
Refused/Dismissed	2,066	1,864	2,035	1,914	1,686
Withdrawn, Dismissed on Appellant's Motion	193	227	180	172	161
Pre-Trial Petitions Filed					
by Commonwealth					
Granted	23	12	11	11	9
Refused/Dismissed/Other	12	13	12	9	11
Withdrawn	5	2	2	5	3
Original Jurisdiction					
Actual Innocence					
Granted	0	1	0	0	2
Refused/Dismissed	29	17	23	22	21
Habeas Corpus					
Granted	0	0	0	0	0
Refused/Dismissed	3	4	3	15	8
Mandamus					
Granted	0	0	1	0	0
Refused/Dismissed	6	6	12	16	15
Prohibition					
Granted	0	0	2	0	0
Refused/Dismissed	2	2	2	1	4
Appeals of Right and Granted Petitions					
Decided by Opinion					
Affirmed	384	465	462	414	340
Reversed	71	72	78	70	51
Dismissed	13	3	9	8	5
Affirmed in Part, Reversed in Part	20	20	14	9	19
Other*	1	0	2	0	0
Decided by Order					
Affirmed	0	65	90	42	17
Reversed	18	13	11	8	14
Dismissed	214	150	74	128	186
Affirmed in Part, Reversed in Part	0	0	0	0	0
Withdrawn, Settled	65	70	66	62	76
Other*	90	88	105	95	98
Concealed Weapon Permit Applications					
Granted	0	0	0	0	0
Refused/Dismissed	5	4	3	3	4
Withdrawn	0	0	0	0	0

*Includes modified, transferred, voided, and certified.

Table 8

JUDGES OF THE COURT OF APPEALS OF VIRGINIA

As of December 31, 2011

	Present Term
Walter S. Felton Jr., Chief Judge	9/1/2010-8/31/2018
Larry G. Elder	5/1/2007-4/30/2015
Robert P. Frank	3/16/2007-3/15/2015
Robert J. Humphreys	4/16/2008-4/15/2016
D. Arthur Kelsey	2/1/2003-1/31/2011
James W. Haley Jr.	2/1/2005-1/31/2013
William G. Petty	3/16/2006-3/15/2014
Randolph A. Beales	4/16/2006-4/15/2014
Rossie D. Alston Jr.	3/1/2009-2/28/2017
Stephen R. McCullough	8/1/2011-7/31/2019
Glen A. Huff	8/1/2011-7/31/2019

SENIOR JUDGES OF THE COURT OF APPEALS OF VIRGINIA

As of December 31, 2011

Sam W. Coleman, III
 Jere M. H. Willis, Jr.
 Rosemarie Annunziata
 Rudolph Bungardner, III
 Jean Harrison Clements

CLERK OF THE COURT OF APPEALS OF VIRGINIA

Cynthia L. McCoy



2011 The Judiciary's Year in Review

Virginia
Circuit Courts

CIRCUIT COURT

Jurisdiction and Structure

The Circuit Courts are Virginia’s trial courts of general jurisdiction and have the authority to try a full range of civil and criminal cases. The circuit court system consists of 31 judicial circuits encompassing 120 separate circuit courts in the various counties and cities of the state. The judges of the Circuit Courts are elected and receive interim appointments in the same manner as the Court of Appeals judges. The Chief Judge of the circuit is elected for a two-year term by a vote of the judges serving in the circuit. See Table 23. In 2011, there were three courts, Virginia Beach

(2nd), Alexandria (18th) and Fairfax (19th), that did not use the Courts Automated Information System - Case Management System (CAIS-CMS). These courts transmitted their own manually- or electronically-tabulated data. Statistical information has been italicized for these courts in the tables in this section.

Statistical Summary

The circuit court case filing information for the last two years is summarized in Table 10. The detailed information for the year is included in this section.

Table 9
Circuit Courts
2002-2011 Historical Summary

Year	Cases Commenced	% Change	Cases Concluded	% Change	Cases Pending	% Change
2002	275,457	2.3%	268,381	3.2%	245,677	3.1%
2003	274,722	-0.3%	264,212	-1.6%	250,517	2.0%
2004	282,070	2.7%	272,710	3.2%	254,550	1.6%
2005	278,307	-1.3%	269,187	-1.3%	254,775	0.1%
2006	289,809	4.1%	279,336	3.8%	264,891	4.0%
2007	297,177	2.5%	284,742	1.9%	262,909	-0.7%
2008	291,733	-1.8%	289,095	1.5%	264,624	0.7%
2009	288,407	-1.1%	285,172	-1.4%	258,831	-2.2%
2010	289,378	0.3%	279,363	-2.0%	249,633	-3.6%
2011	283,648	-2.0%	283,432	1.5%	269,285	7.9%

Year	Judges	% Change	Cases Commenced Per Judge	% Change	Cases Concluded Per Judge	% Change
2002	150	0.0%	1,863	3.8%	1,789	3.2%
2003	150	0.0%	1,831	-1.7%	1,761	-1.6%
2004	150	0.0%	1,880	2.7%	1,818	3.2%
2005	156	4.0%	1,784	-5.1%	1,726	-5.1%
2006	157	0.6%	1,846	3.5%	1,779	3.1%
2007	157	0.0%	1,893	2.5%	1,814	1.9%
2008	157	0.0%	1,858	-1.8%	1,841	1.5%
2009	157	0.0%	1,837	-1.1%	1,816	-1.4%
2010	154*	-1.9%	1,879	2.3%	1,814	-0.1%
2011	154*	0.0%	1,842	-2.0%	1,840	1.5%

*Funded positions as of July 1, 2011.

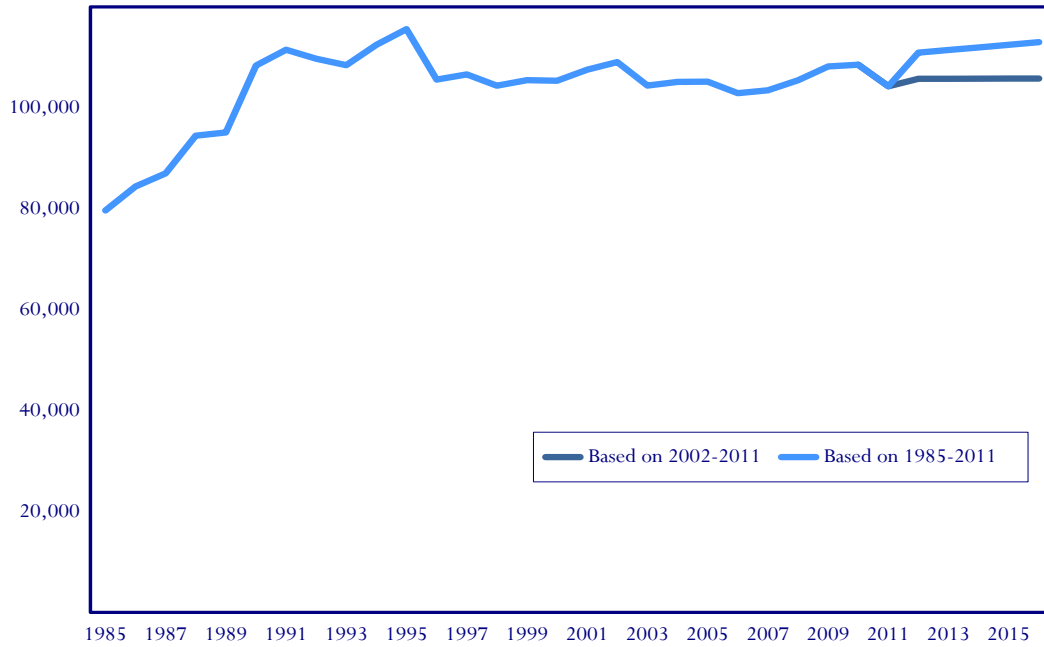
Year	Criminal Cases				Civil Cases			
	Cases Commenced	% Change	Cases Concluded	% Change	Cases Commenced	% Change	Cases Concluded	% Change
2002	166,389	2.9%	164,846	2.8%	109,068	1.4%	103,535	3.8%
2003	170,299	2.3%	165,301	0.3%	104,423	-4.3%	98,911	-4.5%
2004	176,873	3.9%	172,090	4.1%	105,197	0.7%	100,620	1.7%
2005	175,264	-0.9%	170,701	-0.8%	103,043	-2.0%	98,486	-2.1%
2006	186,892	6.6%	182,416	6.9%	102,917	-0.1%	96,920	-1.6%
2007	193,705	3.6%	188,332	3.2%	103,472	0.5%	96,410	-0.5%
2008	186,261	-3.8%	188,824	0.3%	105,472	1.9%	100,271	4.0%
2009	180,198	-3.3%	183,630	-2.8%	108,209	2.6%	101,542	1.3%
2010	180,825	0.3%	178,191	-3.0%	108,553	0.3%	101,172	-0.4%
2011	179,362	-0.8%	180,422	1.3%	104,286	-3.9%	103,010	1.8%

Table 10
Circuit Courts
 2010-2011 Percent Changes in Commenced Cases

Circuit	Criminal Cases			Civil Cases			Total Cases		
	2010	2011	% Change	2010	2011	% Change	2010	2011	% Change
1	6,248	5,782	-7.5%	2,538	2,343	-7.7%	8,786	8,125	-7.5%
2	9,927	10,302	3.8%	6,759	6,776	0.3%	16,686	17,078	2.3%
3	4,460	3,898	-12.6%	2,917	3,652	25.2%	7,377	7,550	2.3%
4	9,140	8,747	-4.3%	6,948	6,988	0.6%	16,088	15,735	-2.2%
5	3,841	4,209	9.6%	1,752	1,718	-1.9%	5,593	5,927	6.0%
6	3,197	3,340	4.5%	1,378	1,242	-9.9%	4,575	4,582	0.2%
7	5,220	5,251	0.6%	2,626	2,334	-11.1%	7,846	7,585	-3.3%
8	2,918	2,846	-2.5%	1,850	1,808	-2.3%	4,768	4,654	-2.4%
9	4,657	4,360	-6.4%	2,886	2,765	-4.2%	7,543	7,125	-5.5%
10	4,918	6,032	22.7%	1,815	1,706	-6.0%	6,733	7,738	14.9%
11	3,574	3,524	-1.4%	1,500	1,513	0.9%	5,074	5,037	-0.7%
12	6,491	6,800	4.8%	3,699	3,616	-2.2%	10,190	10,416	2.2%
13	8,584	9,245	7.7%	5,015	4,648	-7.3%	13,599	13,893	2.2%
14	6,990	6,501	-7.0%	3,201	3,101	-3.1%	10,191	9,602	-5.8%
15	13,953	14,456	3.6%	6,058	5,575	-8.0%	20,011	20,031	0.1%
16	5,515	5,271	-4.4%	3,608	3,372	-6.5%	9,123	8,643	-5.3%
17	2,981	3,160	6.0%	1,650	1,743	5.6%	4,631	4,903	5.9%
18	1,510	1,572	4.1%	4,656	5,023	7.9%	6,166	6,595	7.0%
19	7,126	7,256	1.8%	14,398	13,193	-8.4%	21,524	20,449	-5.0%
20	3,000	2,983	-0.6%	5,064	4,536	-10.4%	8,064	7,519	-6.8%
21	3,685	3,460	-6.1%	896	857	-4.4%	4,581	4,317	-5.8%
22	6,127	6,269	2.3%	1,854	1,971	6.3%	7,981	8,240	3.2%
23	5,091	4,965	-2.5%	3,049	2,900	-4.9%	8,140	7,865	-3.4%
24	5,302	5,515	4.0%	3,120	3,141	0.7%	8,422	8,656	2.8%
25	5,830	5,430	-6.9%	2,881	2,738	-5.0%	8,711	8,168	-6.2%
26	8,474	9,328	10.1%	3,871	3,766	-2.7%	12,345	13,094	6.1%
27	8,837	8,311	-6.0%	3,242	3,048	-6.0%	12,079	11,359	-6.0%
28	4,581	4,084	-10.8%	1,400	1,305	-6.8%	5,981	5,389	-9.9%
29	7,827	6,773	-13.5%	1,642	1,606	-2.2%	9,469	8,379	-11.5%
30	6,303	5,120	-18.8%	1,547	1,294	-16.4%	7,850	6,414	-18.3%
31	4,518	4,572	1.2%	4,733	4,008	-15.3%	9,251	8,580	-7.3%
Totals	180,825	179,362	-0.8%	108,553	104,286	-3.9%	289,378	283,648	-2.0%
Urban	81,204	80,897	-0.4%	64,039	62,133	-3.0%	145,243	143,030	-1.5%
Rural	99,621	98,465	-1.2%	44,514	42,153	-5.3%	144,135	140,618	-2.4%

Urban circuits are 1, 2, 3, 4, 7, 8, 12, 13, 14, 17, 18, 19, 23, 31

Display 6
Circuit Courts
Trends in Commenced Civil Cases



Display 7
Circuit Courts
Trends in Commenced Criminal Cases
(Cases in thousands)

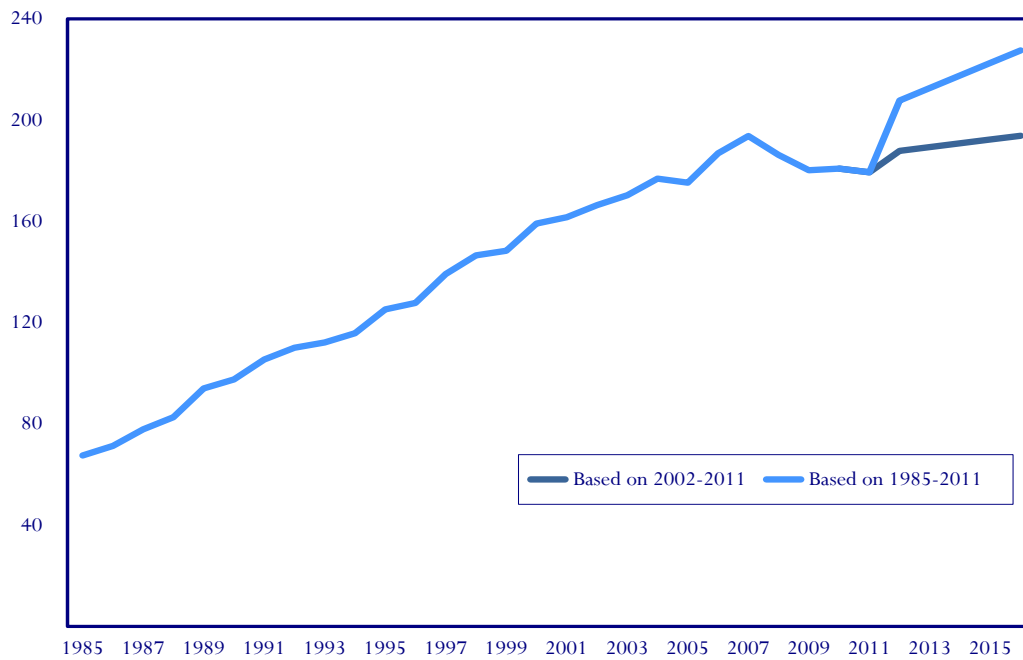


Table 11
Circuit Courts

Trial Rates 2002 - 2011

Year	Civil Cases Commenced	Civil Cases Concluded	Cases Concluded by Judge Trial	Cases Concluded by Jury Trial	Total Cases Concluded by Trial
2002	109,068	103,535	20,157	1,165	21,322
2003	104,423	98,911	19,922	932	20,854
2004	105,197	100,620	20,554	837	21,391
2005	103,043	98,486	20,258	719	20,977
2006	102,917	96,920	21,595	694	22,289
2007	103,472	96,410	22,019	666	22,685
2008	105,472	100,271	22,887	618	23,505
2009	108,209	101,542	22,851	592	23,443
2010	108,533	101,172	23,678	576	24,254
2011	104,286	103,010	24,303	613	24,916

Year	Percent of Cases Concluded by Judge Trial	Percent of Cases Concluded by Jury Trial	Percent of Cases Concluded by Trial	Juries Impaneled Law	Juries Impaneled Equity	Total Civil Juries
2002	19.5%	1.1%	20.59%	1,352	17	1,369
2003	20.1%	0.9%	21.08%	1,189	7	1,196
2004	20.4%	0.8%	21.26%	1,061	10	1,071
2005	20.6%	0.7%	21.30%	980	10	990
2006	22.3%	0.7%	23.00%	873	5	878
2007	22.8%	0.7%	23.53%	766	9	775
2008	22.8%	0.6%	23.44%	799	-	799
2009	22.5%	0.6%	23.09%	812	-	812
2010	23.4%	0.6%	23.97%	805	-	805
2011	23.6%	0.6%	24.19%	839	-	805

Year	Criminal Cases Commenced	Criminal Cases Concluded	Cases Concluded by Judge Trial	Cases Concluded by Jury Trial	Total Cases Concluded by Trial
2002	166,389	164,846	55,342	2,482	57,824
2003	170,299	165,301	54,571	2,156	56,727
2004	176,873	172,090	54,180	2,173	56,353
2005	175,264	170,701	51,581	2,297	53,878
2006	186,892	182,416	54,378	2,502	56,880
2007	193,705	188,332	56,049	2,926	58,975
2008	186,261	188,824	57,760	2,688	60,448
2009	180,198	183,630	54,398	2,948	57,346
2010	180,825	178,191	52,238	2,882	55,120
2011	179,362	180,422	53,168	2,430	55,598

Year	Percent of Cases Concluded by Judge Trial	Percent of Cases Concluded by Jury Trial	Percent of Cases Concluded by Trial	Juries Impaneled Felony	Juries Impaneled Misdemeanor	Total Criminal Juries
2002	33.6%	1.5%	35.08%	1,139	195	1,334
2003	33.0%	1.3%	34.32%	1,023	170	1,193
2004	31.5%	1.3%	32.75%	994	203	1,197
2005	30.2%	1.3%	31.56%	982	190	1,172
2006	29.8%	1.4%	31.18%	1,019	204	1,223
2007	29.8%	1.6%	31.31%	850	171	1,021
2008	30.6%	1.4%	32.01%	1,061	208	1,269
2009	29.6%	1.6%	31.23%	1,085	180	1,265
2010	29.3%	1.6%	30.93%	985	218	1,203
2011	29.5%	1.3%	30.82%	889	205	1,094

C I R C U I T C O U R T S

Table 12
Circuit Courts
2011 Age of Concluded Cases

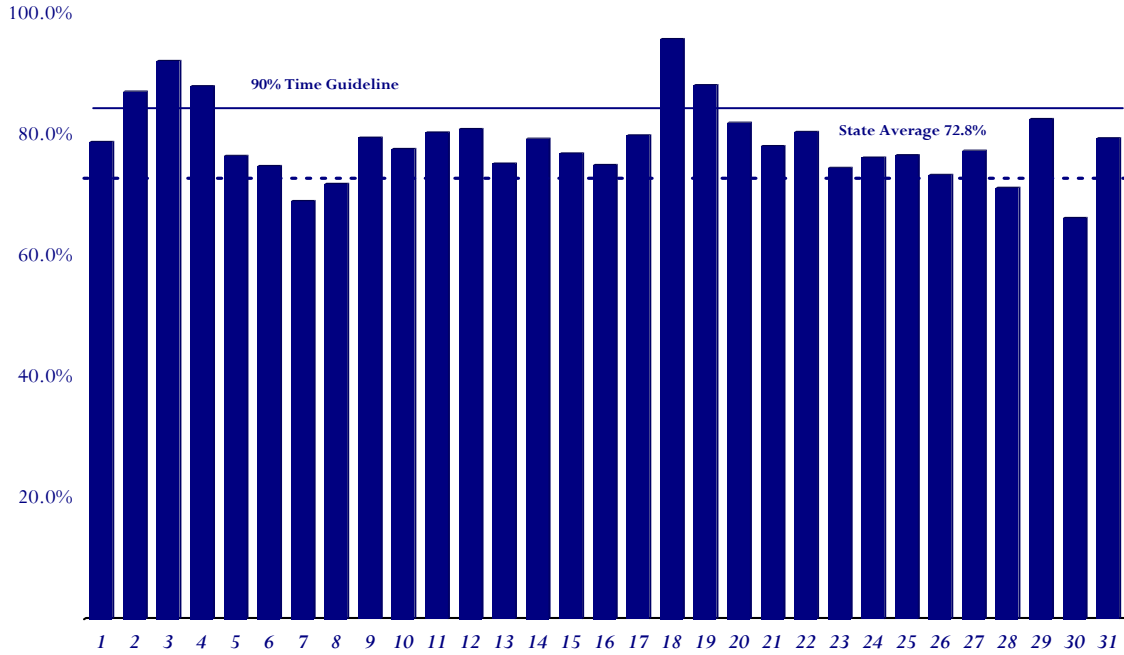
Circuit	CIVIL CASES				CRIMINAL CASES			
	% Concluded Within 12 Months of Filing				% Tried/Adjudicated Within Time Frame Specified			
	Excluding Purged and Divorce Cases	Rank	All Civil Cases	Rank	FELONIES Tried/Adjudicated Within 120 Days of Arrest	Rank	MISDEMEANORS Tried/Adjudicated Within 60 Days of Arrest	Rank
1	78.0%	12	72.0%	20	48.1%	9	49.6%	13
2	81.0%	7	69.9%	25	32.8%	27	46.5%	17
3	90.3%	3	81.8%	4	51.5%	8	57.7%	6
4	85.8%	5	86.6%	3	51.8%	7	51.4%	8
5	76.2%	16	75.2%	11	41.6%	18	42.5%	21
6	73.7%	23	76.4%	10	33.8%	26	29.9%	30
7	68.9%	29	73.1%	18	26.7%	30	28.9%	31
8	67.7%	30	65.0%	28	42.1%	16	50.5%	11
9	76.6%	14	70.6%	23	42.4%	15	37.8%	25
10	76.2%	15	72.9%	19	40.4%	20	34.5%	29
11	79.7%	10	78.0%	9	42.1%	17	61.8%	3
12	80.2%	8	79.1%	7	40.1%	22	46.9%	15
13	74.6%	19	74.6%	13	43.5%	12	51.2%	9
14	75.0%	18	71.6%	21	43.2%	14	52.0%	7
15	75.1%	17	73.2%	17	35.6%	25	37.0%	26
16	74.4%	20	74.5%	14	40.8%	19	36.8%	27
17	79.3%	11	74.5%	15	28.0%	29	42.6%	20
18	95.8%	2	98.7%	1	97.7%	1	75.5%	1
19	87.9%	4	88.1%	2	77.4%	2	71.5%	2
20	81.0%	6	75.1%	12	40.2%	21	49.9%	12
21	77.7%	13	81.6%	5	53.7%	5	46.4%	18
22	79.9%	9	79.3%	6	57.9%	3	60.2%	4
23	71.5%	27	68.5%	27	56.1%	4	59.1%	5
24	73.2%	24	70.9%	22	43.3%	13	44.6%	19
25	74.3%	21	70.1%	24	46.3%	10	40.3%	22
26	72.5%	26	78.2%	8	36.6%	24	38.5%	23
27	73.2%	25	69.2%	26	31.1%	28	37.9%	24
28	69.9%	28	73.6%	16	53.1%	6	46.9%	16
29	67.5%	31	52.4%	31	37.5%	23	48.3%	14
30	61.0%	32	58.2%	30	45.6%	11	35.4%	28
31	73.9%	22	60.5%	29	18.8%	31	50.6%	10
State	79.0%		76.4%		43.2%		46.7%	
Urban	81.7%		79.2%		45.8%		51.2%	
Rural	75.2%		72.4%		41.4%		41.8%	

Urban circuits are 1, 2, 3, 4, 7, 8, 12, 13, 14, 17, 18, 19, 23, 31

Display 8
Circuit Courts

2011 Percent of Civil Cases** Concluded Within 12 Months of Filing

(In Circuit Order)



**Excludes Divorce and Purged Cases

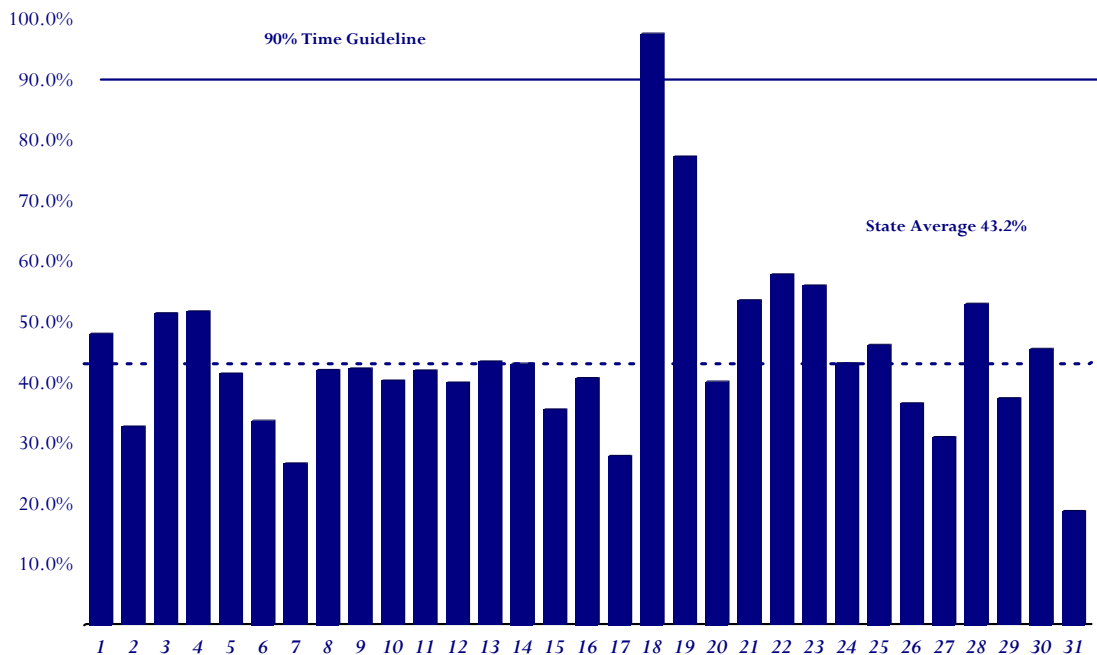
C I R C U I T C O U R T S

Display 9

Circuit Courts

2011 Percent of Felony Cases Tried/Adjudicated Within 120 Days of Arrest

(In Circuit Order)

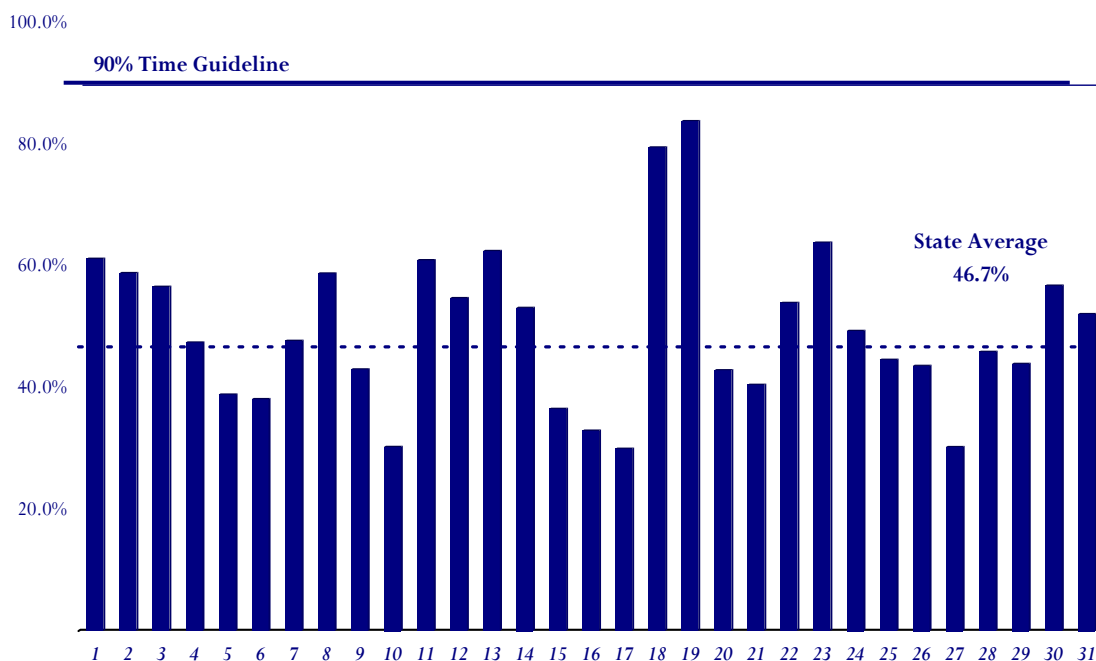


Display 10

Circuit Courts

2011 Percent of Misdemeanor Cases Tried/Adjudicated Within 60 Days of Arrest/Filing

(In Circuit Order)



Note: These statistics are taken from the Courts Automated Information System - Case Management System. Courts not using this system transmit their own manually- or electronically-tabulated data to the Office of the Executive Secretary. These courts include Virginia Beach (2nd Judicial Circuit), Alexandria (18th Judicial Circuit), and Fairfax (19th Judicial Circuit).

Table 13
Circuit Courts
 2002-2011 Age of Concluded Civil Cases

Civil Cases (Excludes Divorce Cases Only)

Percent of Cases Concluded Within Specified Time Frames

Time Interval	2002	2003	2004	2005	2006	2007	2008	2009	2010	2011
00-03 Months	36.0%	36.9%	36.9%	37.5%	38.5%	38.9%	38.5%	39.4%	37.9%	38.3%
04-06 Months	13.7%	14.3%	14.3%	14.7%	14.9%	14.7%	14.4%	16.2%	18.6%	17.0%
07-12 Months	17.9%	17.4%	17.5%	17.5%	17.6%	17.4%	16.7%	17.0%	18.5%	17.6%
13-18 Months	8.9%	8.8%	8.8%	8.9%	9.0%	9.0%	8.8%	7.7%	8.4%	8.6%
19-24 Months	4.6%	4.7%	4.7%	4.6%	4.6%	4.4%	4.3%	4.0%	4.2%	4.2%
25-36 Months	5.6%	5.2%	5.2%	5.2%	5.6%	5.4%	5.2%	4.7%	4.1%	4.4%
37-48 Months	5.6%	6.7%	6.5%	6.1%	5.5%	5.2%	5.4%	4.1%	4.2%	4.3%
49-60 Months	3.1%	2.6%	2.5%	2.5%	1.9%	2.0%	2.7%	2.2%	1.8%	2.5%
60+ Months	4.7%	3.6%	3.5%	3.0%	2.5%	2.9%	4.0%	4.6%	2.4%	3.2%
Total	100.0%	100.0%	100.0%	100.0%	100.0%	100.0%	100.0%	100.0%	100.0%	100.0%

Percent of Cases Concluded Within 12 Months of Filing

Time Interval	2002	2003	2004	2005	2006	2007	2008	2009	2010	2011
State	67.6%	68.5%	68.7%	69.7%	71.0%	71.0%	69.5%	72.6%	74.9%	72.8%

Civil Cases (Includes All Civil Cases)

Percent of Cases Concluded Within Specified Time Frames

Time Interval	2002	2003	2004	2005	2006	2007	2008	2009	2010	2011
00-03 Months	39.0%	39.0%	39.0%	39.9%	41.3%	42.0%	41.5%	43.0%	42.9%	43.1%
04-06 Months	15.6%	15.8%	15.9%	16.3%	16.3%	16.1%	15.5%	16.7%	18.3%	17.3%
07-12 Months	16.3%	16.4%	16.4%	16.2%	16.3%	16.1%	15.6%	15.7%	16.6%	16.0%
13-18 Months	8.2%	8.5%	8.3%	8.3%	8.3%	8.3%	8.3%	7.3%	7.6%	7.6%
19-24 Months	4.2%	4.3%	4.2%	4.2%	4.0%	4.0%	3.9%	3.7%	3.7%	3.6%
25-36 Months	5.2%	4.8%	4.8%	4.8%	5.2%	4.8%	4.6%	4.3%	3.6%	3.8%
37-48 Months	5.1%	5.1%	5.9%	5.5%	4.9%	4.6%	4.8%	3.8%	3.6%	3.7%
49-60 Months	2.5%	2.2%	2.3%	2.3%	1.7%	1.7%	2.3%	1.9%	1.6%	2.1%
60+ Months	4.0%	3.9%	3.3%	2.7%	2.1%	2.4%	3.4%	3.8%	2.0%	2.6%
Total	100.0%	100.0%	100.0%	100.0%	100.0%	100.0%	100.0%	100.0%	100.0%	100.0%

Percent of Cases Concluded Within 12 Months of Filing

Time Interval	2002	2003	2004	2005	2006	2007	2008	2009	2010	2011
State	70.9%	71.3%	71.2%	72.4%	73.8%	74.3%	72.7%	75.3%	77.9%	76.4%

Voluntary Case Processing Time Guidelines

90% of all civil cases should be settled, tried, or otherwise concluded within 12 months of the date of case filing; 98% with 18 months of filing; and the remainder within 24 months of filing except for individual cases in which the court determines exceptional circumstances exist and for which a continuing review should occur.

C I R C U I T C O U R T S

Table 14

Circuit Courts

2002-2011 Age of Concluded Criminal Cases

<i>Felony Cases</i>										
<i>Percent of Cases Tried/Adjudicated Within Specified Time Frames</i>										
Time Interval	2002	2003	2004	2005	2006	2007	2008	2009	2010	2011
00-60 Days	24.7%	25.4%	23.6%	22.7%	21.9%	22.6%	22.0%	22.2%	21.7%	20.4%
61-90 Days	12.3%	12.7%	12.2%	12.0%	11.3%	11.4%	11.9%	11.2%	11.3%	11.0%
91-120 Days	13.1%	13.4%	13.4%	12.4%	12.0%	12.0%	12.5%	12.0%	12.1%	11.8%
121-150 Days	10.6%	10.9%	11.1%	10.4%	10.4%	10.7%	10.6%	10.5%	10.7%	11.0%
151-180 Days	8.4%	8.8%	8.6%	8.5%	8.8%	8.7%	9.0%	8.8%	8.7%	9.1%
181-270 Days	15.3%	14.5%	15.5%	16.4%	17.0%	16.1%	15.5%	15.9%	16.5%	17.0%
271-365 Days	6.5%	5.7%	6.3%	7.4%	7.4%	8.2%	7.3%	7.3%	7.8%	8.1%
365+ Days	9.1%	8.6%	9.3%	10.1%	11.2%	10.3%	11.2%	12.2%	11.2%	11.7%
Total	100.0%	100.0%	100.0%	100.0%	100.0%	100.0%	100.0%	100.0%	100.0%	100.0%
<i>Percent of Cases Tried/Adjudicated Within 120 Days of Arrest</i>										
Time Interval	2002	2003	2004	2005	2006	2007	2008	2009	2010	2011
State	50.1%	51.5%	49.3%	47.1%	45.2%	46.0%	46.4%	45.3%	45.2%	43.2%
<i>Percent of Cases Tried/Adjudicated Within 180 Days of Arrest</i>										
Time Interval	2002	2003	2004	2005	2006	2007	2008	2009	2010	2011
State	69.1%	71.2%	69.0%	66.1%	64.4%	65.4%	66.0%	64.6%	64.6%	63.3%
<i>Misdemeanor Cases</i>										
<i>Percent of Cases Tried/Adjudicated Within Specified Time Frames</i>										
Time Interval	2002	2003	2004	2005	2006	2007	2008	2009	2010	2011
00-60 Days	53.0%	53.2%	51.4%	48.0%	48.4%	48.3%	49.3%	50.7%	48.6%	46.7%
61-90 Days	17.5%	17.7%	18.0%	17.5%	17.4%	17.5%	16.2%	16.3%	17.1%	17.4%
91-120 Days	9.2%	9.5%	9.5%	10.0%	9.9%	10.3%	10.2%	10.0%	10.6%	11.1%
121-150 Days	5.7%	5.7%	5.2%	5.9%	5.8%	6.2%	6.6%	5.8%	6.3%	6.6%
151-180 Days	3.2%	3.0%	3.1%	3.9%	3.8%	3.9%	4.0%	3.6%	3.7%	3.8%
181-270 Days	5.1%	5.0%	5.8%	6.5%	6.4%	6.5%	5.9%	6.0%	6.4%	6.7%
271-365 Days	2.0%	1.8%	2.3%	2.5%	2.5%	2.6%	2.8%	2.7%	2.7%	2.7%
365+ Days	4.4%	4.0%	4.7%	5.7%	5.7%	4.8%	5.1%	4.8%	4.6%	5.1%
Total	100.0%	100.0%	100.0%	100.0%	100.0%	100.0%	100.0%	100.0%	100.0%	100.0%
<i>Percent of Cases Tried/Adjudicated Within 60 Days of Arrest</i>										
Time Interval	2002	2003	2004	2005	2006	2007	2008	2009	2010	2011
State	53.0%	53.2%	51.4%	48.0%	48.4%	48.3%	49.3%	50.7%	48.6%	46.7%
<i>Percent of Cases Tried/Adjudicated Within 90 Days of Arrest</i>										
Time Interval	2002	2003	2004	2005	2006	2007	2008	2009	2010	2011
State	70.5%	71.0%	69.4%	65.5%	65.8%	65.8%	65.5%	67.0%	65.7%	64.1%

Voluntary Case Processing Time Guidelines

90% of all felony cases should be adjudicated or otherwise concluded within 120 days from the date of arrest; 98% within 180 days; and 100% within one year. Preliminary hearings for felony cases in district courts should be concluded within 45 days from the date of arrest. 90% of all misdemeanor cases should be adjudicated or otherwise concluded within 60 days from the date of arrest and 100% within 90 days.

Table 15
Circuit Courts

2011 Commenced Caseload by Circuit with State Rankings

Circuit	Judges	Civil Total	State Rank	Civil Cases/ Judge	State Rank	Criminal Total	State Rank	Criminal Cases/ Judge	State Rank	Total Cases Commenced	
										Cases/ Judge	State Rank
1	5.00	2,343	19	469	26	5,782	13	1,156	17	1,625	26
2	10.00	6,776	3	678	12	10,302	2	1,030	23	1,708	23
3	5.00	3,652	10	730	7	3,898	24	780	27	1,510	27
4	9.00	6,988	2	776	5	8,747	5	972	24	1,748	19
5	3.00	1,718	24	573	21	4,209	22	1,403	9	1,976	13
6	2.00	1,242	30	621	16	3,340	27	1,670	6	2,291	4
7	4.00	2,334	20	584	19	5,251	17	1,313	14	1,896	15
8	4.00	1,808	22	452	27	2,846	30	712	29	1,164	31
9	4.00	2,765	17	691	10	4,360	21	1,090	20	1,781	18
10	3.00	1,706	25	569	22	6,032	12	2,011	1	2,579	2
11	3.00	1,513	27	504	23	3,524	25	1,175	16	1,679	24
12	5.00	3,616	11	723	8	6,800	8	1,360	11	2,083	9
13	7.00	4,648	6	664	14	9,245	4	1,321	13	1,985	12
14	5.00	3,101	14	620	17	6,501	10	1,300	15	1,920	14
15	8.00	5,575	4	697	9	14,456	1	1,807	3	2,504	3
16	5.00	3,372	12	674	13	5,271	16	1,054	21	1,729	21
17	3.00	1,743	23	581	20	3,160	28	1,053	22	1,634	25
18	3.00	5,023	5	1674	1	1,572	31	524	30	2,198	6
19	15.00	13,193	1	880	3	7,256	7	484	31	1,363	29
20	4.00	4,536	7	1134	2	2,983	29	746	28	1,880	16
21	3.00	857	31	286	31	3,460	26	1,153	18	1,439	28
22	4.00	1,971	21	493	24	6,269	11	1,567	8	2,060	10
23	6.00	2,900	16	483	25	4,965	19	828	26	1,311	30
24	5.00	3,141	13	628	15	5,515	14	1,103	19	1,731	20
25	4.00	2,738	18	685	11	5,430	15	1,358	12	2,042	11
26	5.00	3,766	9	753	6	9,328	3	1,866	2	2,619	1
27	5.00	3,048	15	610	18	8,311	6	1,662	7	2,272	5
28	3.00	1,305	28	435	28	4,084	23	1,361	10	1,796	17
29	4.00	1,606	26	402	30	6,773	9	1,693	5	2,095	8
30	3.00	1,294	29	431	29	5,120	18	1,707	4	2,138	7
31	5.00	4,008	8	802	4	4,572	20	914	25	1,716	22
Total	154.00	104,286		677		179,362		1,165			

C I R C U I T C O U R T S

Table 16
Circuit Courts
2011 Cases Commenced Per Judge

Circuit	Judges	1 & 2 Felony	Other Felony	Misde- meanor	Criminal Total*	Civil Total*	Grand Total*
1	5.00	7	712	438	1,156	469	1,625
2	10.00	4	539	487	1,030	678	1,708
3	5.00	3	455	322	780	730	1,510
4	9.00	0	607	364	972	776	1,748
5	3.00	9	1,068	325	1,403	573	1,976
6	2.00	8	1,073	590	1,670	621	2,291
7	4.00	65	670	579	1,313	584	1,896
8	4.00	7	452	253	712	452	1,164
9	4.00	18	649	423	1,090	691	1,781
10	3.00	17	1,599	394	2,011	569	2,579
11	3.00	11	815	348	1,175	504	1,679
12	5.00	6	827	527	1,360	723	2,083
13	7.00	26	824	471	1,321	664	1,985
14	5.00	7	783	510	1,300	620	1,920
15	8.00	9	1,183	615	1,807	697	2,504
16	5.00	8	708	338	1,054	674	1,729
17	3.00	3	803	247	1,053	581	1,634
18	3.00	22	323	180	524	1,674	2,198
19	15.00	3	284	197	484	880	1,363
20	4.00	4	486	256	746	1,134	1,880
21	3.00	18	744	392	1,153	286	1,439
22	4.00	7	1,048	513	1,567	493	2,060
23	6.00	5	592	230	828	483	1,311
24	5.00	6	781	316	1,103	628	1,731
25	4.00	30	1,014	314	1,358	685	2,042
26	5.00	5	1,335	525	1,866	753	2,619
27	5.00	4	1,220	438	1,662	610	2,272
28	3.00	13	1,158	191	1,361	435	1,796
29	4.00	2	1,394	298	1,693	402	2,095
30	3.00	2	1,173	532	1,707	431	2,138
31	5.00	13	576	326	914	802	1,716
State Average***	154.00	10	772	383	1,174	705	1,879
Urban Average***					944	745	1,689
Rural Average***					1,465	655	2,120

Urban circuits are 1, 2, 3, 4, 7, 8, 12, 13, 14, 17, 18, 19, 23, 31

Note: Figures may not sum to total due to rounding.

***State average is the established average used in the JBRS Report, 2011.

Table 17

Circuit Courts

2011 Cases Concluded Per Judge

Circuit	Judges	1 & 2 Felony	Other Felony	Misde- meanor	Criminal Total*	Civil Total*	Grand Total*
1	5.00	7	784	388	1,178	411	1,589
2	10.00	5	519	517	1,041	681	1,722
3	5.00	5	531	321	857	663	1,520
4	9.00	1	671	377	1,049	779	1,828
5	3.00	10	1,018	285	1,313	580	1,894
6	2.00	8	1,042	531	1,580	576	2,156
7	4.00	37	735	553	1,325	446	1,771
8	4.00	4	451	189	644	431	1,075
9	4.00	16	691	420	1,127	672	1,798
10	3.00	13	1,555	398	1,965	573	2,539
11	3.00	18	795	335	1,148	505	1,653
12	5.00	5	801	467	1,273	700	1,972
13	7.00	27	826	452	1,305	600	1,905
14	5.00	3	807	511	1,321	617	1,938
15	8.00	12	1,155	618	1,784	662	2,446
16	5.00	6	777	340	1,123	567	1,690
17	3.00	2	744	219	964	618	1,582
18	3.00	28	333	174	535	1,609	2,144
19	15.00	4	294	193	491	923	1,414
20	4.00	5	491	228	724	1,147	1,871
21	3.00	25	729	401	1,155	308	1,463
22	4.00	25	1,123	546	1,694	484	2,178
23	6.00	4	578	216	798	494	1,292
24	5.00	6	796	298	1,100	623	1,723
25	4.00	45	1,125	329	1,499	690	2,189
26	5.00	5	1,236	500	1,741	726	2,467
27	5.00	4	1,385	389	1,778	632	2,409
28	3.00	3	1,239	176	1,418	434	1,852
29	4.00	3	1,376	288	1,667	501	2,168
30	3.00	7	1,290	590	1,888	482	2,370
31	5.00	13	525	287	825	847	1,672
State Average***	154.00	10	789	372	1,172	669	1,779
Urban Average***							1,582
Rural Average***							2,048

Urban circuits are 1, 2, 3, 4, 7, 8, 12, 13, 14, 17, 18, 19, 23, 31

Note: Figures may not sum to total due to rounding.

***State average is the established average used in the JBRS Report, 2011.

C I R C U I T C O U R T S

Table 18
Circuit Courts
*2011 Pending Cases Per Judge**

Circuit	Judge	Civil	Felony	Misdemeanor	Total	State Rank
1	5.00	900	518	359	1,776	18
2	10.00	797	360	74	1,231	5
3	5.00	2,356	272	140	2,769	30
4	9.00	375	470	179	1,024	3
5	3.00	426	833	238	1,497	13
6	2.00	1,192	813	316	2,321	26
7	4.00	3,377	516	385	4,277	31
8	4.00	1,083	351	260	1,694	15
9	4.00	1,002	343	215	1,559	14
10	3.00	1,032	1,160	271	2,463	27
11	3.00	719	414	130	1,263	8
12	5.00	598	434	229	1,261	7
13	7.00	891	485	111	1,487	12
14	5.00	728	345	215	1,289	10
15	8.00	1,154	762	355	2,271	25
16	5.00	1,638	606	222	2,466	28
17	3.00	678	874	195	1,748	17
18	3.00	339	45	73	457	1
19	15.00	1,351	149	235	1,735	16
20	4.00	1,221	429	161	1,810	20
21	3.00	178	366	198	742	2
22	4.00	446	499	261	1,205	4
23	6.00	837	370	121	1,328	11
24	5.00	662	421	173	1,256	6
25	4.00	1,267	711	242	2,220	23
26	5.00	720	980	273	1,973	22
27	5.00	900	731	293	1,925	21
28	3.00	542	635	103	1,280	9
29	4.00	692	924	171	1,786	19
30	3.00	623	1,049	549	2,221	24
31	5.00	1,527	669	442	2,638	29
State Average	154.00	930	523	196	1,649	
Urban Average					1,687	
Rural Average					1,818	

Urban circuits are 1, 2, 3, 4, 7, 8, 12, 13, 14, 17, 18, 19, 23, 31

*Figures may not sum to total due to rounding

Table 19
Circuit Courts
2011 Juries Impaneled and Jury Days Per Judge

Circuit	Judges	JURIES IMPANELED				JURY DAYS			
		Civil	Felony	Misdemeanor	Total*	Civil	Felony	Misdemeanor	Total*
1	5.00	4	6	1	11	7	15	2	23
2	10.00	5	3	0	7	8	7	0	15
3	5.00	2	9	1	12	4	13	1	18
4	9.00	6	6	0	12	10	13	0	23
5	3.00	5	8	1	14	5	17	2	24
6	2.00	3	10	2	14	3	13	2	17
7	4.00	4	6	0	11	11	12	0	23
8	4.00	4	7	1	12	8	9	1	18
9	4.00	3	5	2	9	3	6	2	11
10	3.00	4	4	1	9	7	7	1	15
11	3.00	3	8	0	12	3	9	0	13
12	5.00	8	3	1	12	10	4	1	15
13	7.00	9	7	1	16	11	9	1	21
14	5.00	7	3	1	11	12	4	1	17
15	8.00	8	11	3	21	11	13	3	27
16	5.00	7	12	3	22	11	18	3	32
17	3.00	4	5	3	12	10	7	5	22
18	3.00	5	4	3	12	11	7	3	20
19	15.0	8	7	3	18	18	16	3	38
20	4.00	7	11	3	21	16	16	3	36
21	3.00	1	3	1	5	2	4	1	7
22	4.00	4	6	1	10	5	9	1	14
23	6.00	6	2	0	8	11	4	0	15
24	5.00	7	7	1	14	7	10	1	18
25	4.00	3	5	2	9	3	7	2	12
26	5.00	5	3	2	10	9	4	2	15
27	5.00	4	4	1	8	4	6	1	11
28	3.00	2	4	2	7	3	5	2	10
29	4.00	1	4	0	6	2	6	1	8
30	3.00	1	3	0	4	2	5	0	8
31	5.00	8	6	1	16	16	13	1	31
State Average		5	6	1	12	8	9	1	19
Urban Average					12				
Rural Average					12				

Urban circuits are 1, 2, 3, 4, 7, 8, 12, 13, 14, 17, 18, 19, 23, 31

Note: Figures may not sum to total due to rounding

Table 20
Circuit Court
Judges
 As of December 31, 2011

Circuit	Judge	Term
1	Marjorie T. Arrington	5/1/2008-4/30/2016
	John W. Brown	5/1/2008-4/30/2016
	V. Thomas Forehand Jr.	7/1/2011-6/30/2019
	Bruce H. Kushner	5/1/2007-4/30/2015
	Randall D. Smith	3/1/2005-2/28/2013
2	Glenn R. Croshaw	8/1/2011-7/31/2019
	Edward W. Hanson Jr.	2/16/2009-2/15/2017
	W. Revell Lewis III	8/1/2011-7/31/2019
	Leslie L. Lilley	3/1/2009-2/28/2017
	Frederick B. Lowe	2/1/2007-1/31/2015
	Stephen C. Mahan	10/1/2010-9/30/2018
	William R. O'Brien	2/1/2005-1/31/2013
	H. Thomas Padrick Jr.	2/13/2006-2/12/2014
	A. Bonwill Shockley	3/16/2008-3/15/2016
Patricia L. West	7/1/2008-6/30/2016	
3	James A. Cales Jr.	2/1/2005-1/31/2013
	James C. Hawks	7/1/2006-6/30/2014
	Kenneth R. Melvin	2/1/2010-1/31/2018
	Johnny E. Morrison	2/1/2007-1/31/2015
	Dean W. Sword Jr.	7/1/2007-6/30/2015
4	Karen J. Burrell	7/1/2007-6/30/2015
	John R. Doyle III	2/1/2009-1/31/2017
	Junius P. Fulton III	2/1/2005-1/31/2013
	Mary Jane Hall	3/1/2009-2/28/2017
	Jerrauld C. Jones	2/1/2009-1/31/2017
	Everett A. Martin Jr.	3/16/2011-3/15/2019
	Charles E. Poston	6/1/2010-5/31/2018
	Louis Allen Sherman	2/1/2009-1/31/2017
Norman A. Thomas	5/1/2004-4/30/2012	
5	Rodham T. Delk Jr.	3/16/2009-3/15/2017
	Carl Edward Eason Jr.	2/1/2011-1/31/2019
	William R Savage III	7/1/2011-6/30/2019
6	Samuel E. Campbell	6/1/2011-5/31/2019
	W. Allan Sharrett	7/1/2004-6/30/2012
7	H. Vincent Conway Jr.	2/1/2008-1/31/2016
	Timothy S. Fisher	2/1/2006-1/31/2014
	David F. Pugh	4/1/2011-3/31/2019
	C. Peter Tench	4/1/2011-3/31/2019

Table 20 (continued)

Circuit	Judge	Term
8	Christopher W. Hutton	9/1/2011-8/31/2019
	Bonnie L. Jones	3/1/2009-2/28/2017
	Louis R. Lerner	4/1/2009-3/31/2017
	Wilford Taylor Jr.	7/1/2011-6/30/2019
9	Richard Y. AtLee Jr.	8/1/2011-7/31/2019
	Thomas B. Hoover	2/1/2006-1/31/2014
	R. Bruce Long	5/1/2009-4/30/2017
	Samuel T. Powell III	7/1/2009-6/30/2017
10	Joel C. Cunningham	2/1/2010-1/31/2018
	Leslie M. Osborn	4/1/2008-3/31/2016
11	Pamela S. Baskervill	4/1/2009-3/31/2017
	Paul W. Cella	7/1/2011-6/30/2019
	James F. D'Alton Jr.	7/1/2008-6/30/2016
12	Michael C. Allen	4/1/2008-3/31/2016
	Harold W. Burgess Jr.	2/1/2010-1/31/2018
	Herbert Cogbill Gill Jr.	9/1/2011-8/31/2019
	Timothy J. Hauler	7/1/2009-6/30/2017
	Frederick G. Rockwell III	5/1/2010-4/30/2018
13	Bradley B. Cavedo	2/1/2011-1/31/2019
	Melvin R. Hughes Jr.	2/1/2009-1/31/2017
	C. N. Jenkins Jr.	10/1/2006-9/30/2014
	Beverly W. Snukals	4/1/2010-3/31/2016
	Margaret P. Spencer	8/1/2006-7/31/2014
	Walter W. Stout III	8/1/2010-7/13/2018
	Richard D. Taylor Jr.	2/1/2011-1/31/2019
14	Daniel T. Balfour	4/1/2004-3/31/2012
	Catherine C. Hammond	2/1/2008-1/31/2016
	Lee A. Harris Jr.	8/1/2006-7/31/2014
	Gary A. Hicks	2/1/2008-1/31/2016
	James Stephen Yoffy	7/1/2011-6/30/2019
15	J. Martin Bass	5/1/2005-4/30/2013
	David H. Beck	7/1/2007-6/30/2015
	Sarah L. Deneke	7/1/2011-6/30/2019
	Joseph J. Ellis	5/1/2008-4/30/2016
	J. Overton Harris	5/1/2008-4/30/2016
	Charles S. Sharp	2/1/2009-1/31/2017
	Harry T. Taliaferro III	5/1/2009-4/30/2017
	Gordon F. Willis	4/1/2007-3/31/2015
16	John G. Berry	8/1/2008-7/31/2016
	Daniel R. Bouton	4/1/2008-3/31/2016
	Cheryl V. Higgins	4/1/2007-3/31/2015
	Edward L. Hogshire	5/1/2006-4/30/2014
	Timothy K. Sanner	4/1/2011-3/31/2019

C I R C U I T C O U R T S

Table 20 (continued)

Circuit	Judge	Term
17	James F. Almand	2/1/2004-1/31/2012
	Joanne F. Alper	6/1/2006-5/31/2014
	William T. Newman Jr.	3/1/2009-2/28/2017
18	Nolan B. Dawkins	5/1/2008-4/30/2016
	Donald M. Haddock	2/1/2009-1/31/2017
	Lisa Bondareff Kemler	3/1/2005-2/28/2013
19	Leslie M. Alden	8/1/2004-7/31/2012
	Randy I. Bellows	2/1/2011-1/31/2019
	Jan L. Brodie	2/1/2009-1/31/2017
	Michael F. Devine	4/1/2010-3/31/2018
	Brett A. Kassabian	2/1/2010-1/31/2018
	Charles James Maxfield	2/1/2007-1/31/2015
	R. Terrence Ney	2/1/2007-1/31/2015
	Lorraine Nordlund	2/1/2010-1/31/2018
	Jane Marum Roush	7/1/2009-6/30/2017
	David Stanford Schell	2/1/2009-1/31/2017
	Robert J. Smith	2/1/2008-1/31/2016
	Dennis J. Smith	6/1/2011-5/31/2019
	Jonathan C. Thacher	5/1/2006-4/30/2014
Bruce D. White	1/16/2008-1/15/2016	
Marcus D. Williams	2/1/2007-1/31/2015	
20	James H. Chamblin	3/1/2011-2/28/2019
	Thomas D. Horne	7/1/2006-6/30/2014
	Burke F. McCahill	7/1/2008-6/30/2016
	Jeffrey W. Parker	5/1/2009-4/30/2017
21	Martin F. Clark Jr.	5/1/2011-4/30/2019
	G. Carter Greer	3/1/2005-2/28/2013
	David V. Williams	3/1/2006-2/28/2014
22	William N. Alexander II	3/16/2010-3/15/2018
	David A. Melesco	3/1/2005-2/28/2013
	Joseph W. Milam Jr.	2/1/2009-1/31/2017
	Charles J. Strauss	3/16/2006-3/15/2014
23	Jonathan M. Apgar	4/1/2005-3/31/2013
	William D. Broadhurst	11/1/2010-10/31/2018
	Robert P. Doherty Jr.	3/1/2011-2/28/2019
	Charles N. Dorsey	7/1/2010-6/30/2018
	James R. Swanson	4/1/2009-3/31/2017
24	Clifford R. Weckstein	2/1/2011-1/31/2019
	John T. Cook	6/1/2008-5/31/2016
	J. Michael Gamble	3/1/2007-2/28/2015
	Mosby Garland Perrow III	7/1/2005-6/30/2013
	James W. Updike Jr.	4/1/2006-3/31/2014
F. Patrick Yeatts	7/1/2011-6/30/2019	

Table 20 (continued)

Circuit	Judge	Term
25	Humes J. Franklin Jr.	2/13/2006-2/12/2014
	Michael S. Irvine	7/1/2004-6/30/2012
	Victor V. Ludwig	5/1/2008-4/30/2016
	Malfourd W. Trumbo	2/1/2004-1/31/2012
26	Dennis Lee Hupp	8/1/2008-7/31/2016
	James V. Lane	3/1/2009-2/28/2017
	John E. Wetsel Jr.	7/1/2007-6/30/2015
	Thomas J. Wilson IV	5/1/2008-4/30/2016
27	Brett L. Geisler	4/1/2011-3/31/2019
	Colin R. Gibb	7/1/2010-6/30/2018
	Josiah T. Showalter Jr.	4/1/2006-3/31/2014
	Robert M. D. Turk	7/1/2008-6/30/2016
28	Isaac St. C. Freeman	7/1/2005-6/30/2013
	Larry B. Kirksey	4/1/2004-3/31/2012
	C. Randall Lowe	2/1/2009-1/31/2017
29	Teresa M. Chafin	3/1/2005-2/28/2013
	Patrick R. Johnson	5/1/2008-4/30/2016
	Michael Lee Moore	4/1/2010-3/31/2018
	Henry A. Vanover	4/1/2010-3/31/2018
30	Chadwick S. Dotson	7/1/2011-6/30/2019
	John C. Kilgore	7/1/2011-6/30/2019
	Tammy S. McElyea	4/1/2005-3/31/2013
31	Lon Edward Farris	7/1/2004-6/30/2012
	William D. Hamblen	7/1/2006-6/30/2014
	Craig D. Johnston	3/1/2009-2/28/2017
	Mary Grace O'Brien	5/1/2008-4/30/2016
	Richard Bowen Potter	6/1/2007-5/31/2015

TOTAL	
JUDGES	151

C I R C U I T C O U R T S

Table 20 (continued)

Circuit Court Judges Leaving the Bench in 2011

	Circuit	
Honorable Aundria Deloris Foster	7	Retired March 31, 2011
Honorable Richard S. Blanton	10	Retired March 31, 2011
Honorable Burnett Miller III	14	Retired January 31, 2011
Honorable Benjamin N. A. Kendrick	17	Retired January 31, 2011
Honorable John R. Prosser	26	Retired February 28, 2011

Circuit Court Judges Taking the Bench in 2011

	Circuit	
Honorable Glenn R. Croshaw	2	Effective August 1, 2011
Honorable W. Revell Lewis III	2	Effective August 1, 2011
Honorable William R. Savage III	5	Effective July 1, 2011
Honorable Richard Y. AtLee Jr.	9	Effective August 1, 2011
Honorable Paul W. Cella	11	Effective July 1, 2011
Honorable James Stephen Yoffy	14	Effective July 1, 2011
Honorable Sarah L. Deneke	15	Effective July 1, 2011
Honorable F. Patrick Yeatts	24	Effective July 1, 2011
Honorable Chadwick S. Dotson	30	Effective July 1, 2011

*Chief Judges of the Commonwealth of Virginia
As of December 31, 2011*

Circuit		Circuit	
1	V. Thomas Forehand Jr.	17	William T. Newman Jr.
2	Frederick B. Lowe	18	Donald M. Haddock
3	James C. Hawks	19	Dennis J. Smith
4	Junius P. Fulton III	20	Thomas D. Horne
5	Rodham T. Delk Jr.	21	David V. Williams
6	W. Allan Sharrett	22	William N. Alexander II
7	H. Vincent Conway Jr.	23	William D. Broadhurst
8	Christopher W. Hutton	24	Mosby Garland Perrow III
9	R. Bruce Long	25	Humes J. Franklin Jr.
10	Leslie M. Osborn	26	James V. Lane
11	James F. D'Alton Jr.	27	Robert M. D. Turk
12	Harold W. Burgess Jr.	28	C. Randall Lowe
13	Richard D. Taylor Jr.	29	Patrick R. Johnson
14	Catherine C. Hammond	30	Tammy S. McElyea
15	Gordon F. Willis	31	Lon Edward Farris
16	John G. Berry		



2011 The Judiciary's Year in Review

Virginia

General District Courts

GENERAL DISTRICT COURT

Jurisdiction and Structure

In Virginia, the district court system, operational since 1973, is comprised of two distinct courts. A variety of criminal, traffic, and civil cases are heard by the general district courts. In criminal matters, the general district courts hear misdemeanor cases and hold preliminary hearings for felony cases. In civil cases, the

general district court has exclusive jurisdiction in suits involving amounts of \$4,500 or less and concurrent jurisdiction with the circuit courts in suits involving amounts up to \$15,000.

Statistical Summary

The court case filing information for the last two years is summarized in Table 21. The detailed information for the year is included in this section.

Table 21
General District Courts
2010-2011 Percent Change in Caseloads

District	New Cases			Hearings		
	2010	2011	Percent Change	2010	2011	Percent Change
1	88,837	97,642	9.9%	105,367	108018	2.5%
2	194,372	188,206	-3.2%	191,290	189013	-1.2%
2A	30,470	31,115	2.1%	27,566	27360	-0.7%
3	47,446	47,134	-0.7%	63,281	60369	-4.6%
4	134,256	139,707	4.1%	163,274	164598	0.8%
5	62,683	64,213	2.4%	75,316	78154	3.8%
6	124,573	120,663	-3.1%	117,210	125185	6.8%
7	95,023	91,937	-3.2%	115,245	111722	-3.1%
8	73,890	75,279	1.9%	94,149	94092	-0.1%
9	85,303	81,663	-4.3%	94,265	93240	-1.1%
10	68,385	63,978	-6.4%	76,505	73288	-4.2%
11	70,739	77,787	10.0%	82,042	88311	7.6%
12	131,250	130,234	-0.8%	157,278	155717	-1.0%
13	175,013	147,978	-15.4%	213,404	194535	-8.8%
14	132,397	126,222	-4.7%	144,615	140059	-3.2%
15	201,654	184,807	-8.4%	222,537	203975	-8.3%
16	121,191	112,190	-7.4%	115,339	107720	-6.6%
17	79,075	82,507	4.3%	79,304	79660	0.4%
18	36,275	36,568	0.8%	42,561	42800	0.6%
19	331,962	328,192	-1.1%	311,580	302073	-3.1%
20	107,834	105,290	-2.4%	93,336	92904	-0.5%
21	25,188	23,148	-8.1%	27,486	26451	-3.8%
22	49,921	45,848	-8.2%	60,063	57304	-4.6%
23	106,565	97,551	-8.5%	120,927	110874	-8.3%
24	86,400	84,267	-2.5%	98,654	98398	-0.3%
25	94,227	89,180	-5.4%	95,969	92800	-3.3%
26	131,603	134,249	2.0%	139,849	140971	0.8%
27	127,427	126,719	-0.6%	132,161	132495	0.3%
28	59,170	56,731	-4.1%	59,834	57954	-3.1%
29	37,396	35,676	-4.6%	64,861	63822	-1.6%
30	29,023	28,053	-3.3%	41,187	41025	-0.4%
31	126,444	125,526	-0.7%	148,112	144815	-2.2%
Total	3,265,992	3,180,260	-2.6%	3,574,567	3,499,702	-2.1%
Urban	1,752,805	1,714,683	-2.2%	1,950,387	1,898,345	-2.7%
Rural	1,513,187	1,465,577	-3.1%	1,624,180	1,601,357	-1.4%

Urban districts are 1, 2, 3, 4, 7, 8, 12, 13, 14, 17, 18, 19, 23, 31

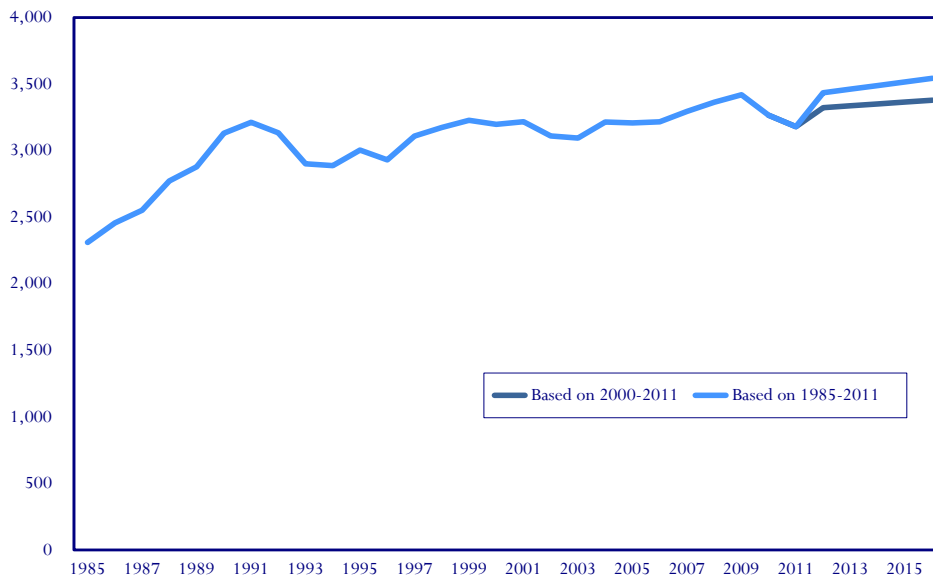
Table 22
General District Courts
 2002-2011 Historical Summary

Year	Judges	Percent Change	New Cases	Percent Change	Hearings	Percent Change	Cases Concluded	Percent Change
2002	123.00	0.0%	3,110,484	-3.3%	3,280,663	-1.3%	3,157,329	-3.3%
2003	123.00	0.0%	3,094,199	-0.5%	3,350,029	2.1%	3,152,011	-0.2%
2004	123.00	0.0%	3,215,144	3.9%	3,480,930	3.9%	3,253,176	3.2%
2005	124.00	0.8%	3,208,161	-0.2%	3,497,664	0.5%	3,240,659	-0.4%
2006	127.00	2.4%	3,216,627	0.3%	3,568,761	2.0%	3,235,054	-0.2%
2007	127.00	0.0%	3,294,759	2.4%	3,621,217	1.5%	3,314,096	2.4%
2008	127.00	0.0%	3,363,593	2.1%	3,667,553	1.3%	3,385,946	2.2%
2009	127.00	0.0%	3,419,971	1.7%	3,721,295	1.5%	3,437,902	1.5%
2010	120.00*	-5.5%	3,265,992	-4.5%	3,574,567	-3.9%	3,289,278	-4.3%
2011	120.00*	0.0%	3,180,260	-2.6%	3,499,702	-2.1%	3,208,211	-2.5%

*Funded positions as of July 1, 2011.

Year	Criminal Cases		Traffic Cases		Civil Cases	
	Cases Commenced	Percent Change	Cases Commenced	Percent Change	Cases Commenced	Percent Change
2002	384,259	-2.6%	1,780,222	-5.2%	946,003	0.2%
2003	376,664	-2.0%	1,768,333	-0.7%	949,202	0.3%
2004	387,912	3.0%	1,900,759	7.5%	926,473	-2.4%
2005	386,206	-0.4%	1,933,015	1.7%	888,940	-4.1%
2006	393,330	1.8%	1,936,328	0.2%	886,969	-0.2%
2007	395,515	0.6%	1,985,315	2.5%	913,929	3.0%
2008	398,402	0.7%	2,019,786	1.7%	945,405	3.4%
2009	385,488	-3.2%	2,114,404	4.7%	920,079	-2.7%
2010	385,633	0.0%	2,046,254	-3.2%	834,105	-9.3%
2011	403,052	4.5%	1,935,280	-5.4%	841,928	0.9%

Display 11
General District Courts
 Trends in New Cases
 (Cases in Thousands)



GENERAL DISTRICT COURTS

Table 23
General District Courts
2011 Caseload Statistics

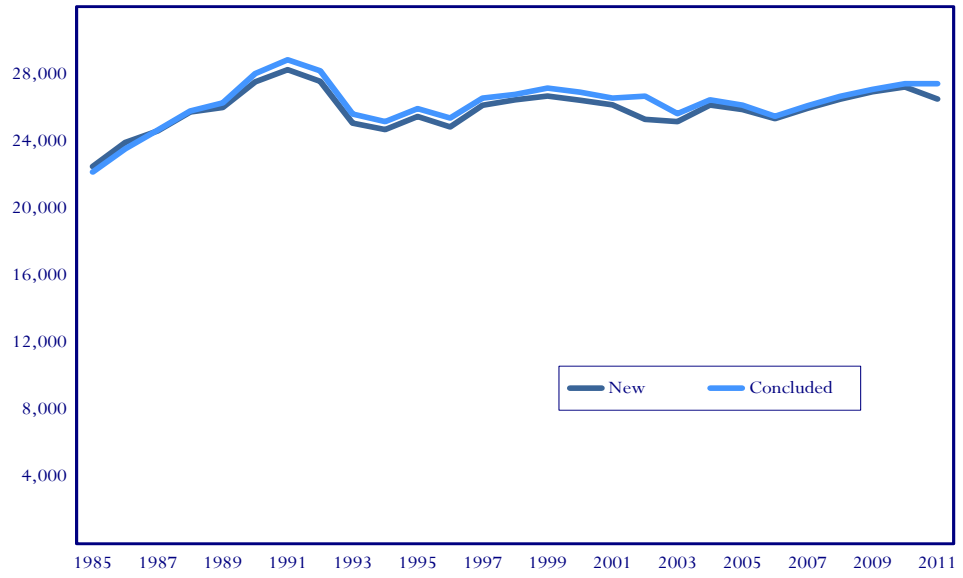
District	Judges	New Cases				Percent Change	Total Hearings	Percent Change	Cases**/ Judge	Hearings/ Judge
		Criminal	Traffic**	Civil	Total**					
2A	1.00	2,406	13,738	5,543	21,687	-0.8%	27,360	-0.7%	21,687	27,360
5	3.00	6,385	27,479	15,950	49,814	2.3%	78,154	3.8%	16,605	26,051
6	3.00	5,930	73,531	8,780	88,241	7.8%	125,185	6.8%	29,414	41,728
9	3.00	11,670	33,259	20,522	65,451	-1.2%	93,240	-1.1%	21,817	31,080
10	3.00	8,717	27,718	12,295	48,730	-6.4%	73,288	-4.2%	16,243	24,429
11	2.00	8,907	37,684	13,087	59,678	8.8%	88,311	7.6%	29,839	44,156
15	6.00	25,171	65,768	51,007	141,946	-7.1%	203,975	-8.3%	23,658	33,996
16	4.00	14,035	34,508	34,801	83,344	-4.7%	107,720	-6.6%	20,836	26,930
20	4.00	11,041	40,111	16,507	67,659	-1.0%	92,904	-0.5%	16,915	23,226
21	2.00	3,633	8,050	7,773	19,456	-6.1%	26,451	-3.8%	9,728	13,226
22	2.00	11,873	14,860	12,396	39,129	-5.2%	57,304	-4.6%	19,565	28,652
24	4.00	14,761	27,563	24,168	66,492	-0.7%	98,398	-0.3%	16,623	24,600
25	4.00	11,046	36,249	16,325	63,620	-4.1%	92,800	-3.3%	15,905	23,200
26	4.00	21,178	45,032	35,247	101,457	2.4%	140,971	0.8%	25,364	35,243
27	4.00	17,222	54,136	16,306	87,664	0.0%	132,495	0.3%	21,916	33,124
28	2.00	7,091	25,891	6,394	39,376	-2.2%	57,954	-3.1%	19,688	28,977
29	2.00	9,110	14,336	7,634	31,080	-4.9%	63,822	-1.6%	15,540	31,911
30	2.00	6,026	11,949	4,631	22,606	-1.7%	41,025	-0.4%	11,303	20,513
Rural	55.00	196,202	591,862	309,366	1,097,430	-1.3%	1,601,357	-1.4%	19,953	29,116
1	4.00	10,369	30,930	40,288	81,587	11.7%	108,018	2.5%	20,397	27,005
2	6.00	22,096	55,857	81,849	159,802	-1.4%	189,013	-1.2%	26,634	31,502
3	3.00	8,145	14,549	18,334	41,028	-2.2%	60,369	-4.6%	13,676	20,123
4	6.00	20,223	44,366	59,734	124,323	4.5%	164,598	0.8%	20,721	27,433
7	4.00	14,827	28,684	38,676	82,187	-2.6%	111,722	-3.1%	20,547	27,931
8	3.00	10,118	27,236	26,404	63,758	2.2%	94,092	-0.1%	21,253	31,364
12	4.00	15,461	53,346	35,399	104,206	-2.0%	155,717	-1.0%	26,052	38,929
13	7.00	20,141	51,303	64,324	135,768	-15.9%	194,535	-8.8%	19,395	27,791
14	4.00	13,173	51,477	40,533	105,183	-4.1%	140,059	-3.2%	26,296	35,015
17	3.00	5,787	39,955	8,984	54,726	3.7%	79,660	0.4%	18,242	26,553
18	2.00	5,309	12,218	10,165	27,692	0.8%	42,800	0.6%	13,846	21,400
19	10.00	25,846	141,428	46,560	213,834	-1.7%	302,073	-3.1%	21,383	30,207
23	5.00	17,233	35,439	28,159	80,831	-7.4%	110,874	-8.3%	16,166	22,175
31	4.00	18,122	46,916	33,153	98,191	-0.4%	144,815	-2.2%	24,548	36,204
Urban	65.00	206,850	633,704	532,562	1,373,116	-2.2%	1,898,345	-2.7%	21,125	29,205
Total	120.00	403,052	1,225,566	841,928	2,470,546	-1.8%	3,499,702	-2.1%		29,164

**Caseloads have been adjusted and do not include Prepaid Traffic Infractions.

Display 12

General District Courts

1985-2011 New and Concluded Cases Per Judge



GENERAL DISTRICT COURTS

Table 24

General District Courts

2011 New Caseload by District with State Rankings

District	Judges	Total Cases**	State Rank	Total Hearings	State Rank	Cases**/ Judge	State Rank
1	4.00	81,587	14	108,018	14	20,397	17
2	6.00	159,802	2	189,013	4	26,634	3
2A	1.00	21,687	31	27,360	31	21,687	11
3	3.00	41,028	25	60,369	26	13,676	30
4	6.00	124,323	5	164,598	5	20,721	15
5	3.00	49,814	23	78,154	23	16,605	24
6	3.00	88,241	10	125,185	11	29,414	2
7	4.00	82,187	13	111,722	12	20,547	16
8	3.00	63,758	19	94,092	17	21,253	13
9	3.00	65,451	18	93,240	18	21,817	10
10	3.00	48,730	24	73,288	24	16,243	25
11	2.00	59,678	21	88,311	21	29,839	1
12	4.00	104,206	7	155,717	6	26,052	5
13	7.00	135,768	4	194,535	3	19,395	20
14	4.00	105,183	6	140,059	9	26,296	4
15	6.00	141,946	3	203,975	2	23,658	8
16	4.00	83,344	12	107,720	15	20,836	14
17	3.00	54,726	22	79,660	22	18,242	21
18	2.00	27,692	29	42,800	29	13,846	29
19	10.00	213,834	1	302,073	1	21,383	12
20	4.00	67,659	16	92,904	19	16,915	22
21	2.00	19,456	32	26,451	32	9,728	32
22	2.00	39,129	27	57,304	28	19,565	19
23	5.00	80,831	15	110,874	13	16,166	26
24	4.00	66,492	17	98,398	16	16,623	23
25	4.00	63,620	20	92,800	20	15,905	27
26	4.00	101,457	8	140,971	8	25,364	6
27	4.00	87,664	11	132,495	10	21,916	9
28	2.00	39,376	26	57,954	27	19,688	18
29	2.00	31,080	28	63,822	25	15,540	28
30	2.00	22,606	30	41,025	30	11,303	31
31	4.00	98,191	9	144,815	7	24,548	7
Total	120.00	2,470,546		3,499,702			
State Average***						20,968	
Urban Average***						21,599	
Rural Average***						20,223	

**Caseloads have been adjusted and do not include Prepaid Traffic Infractions.

***State average is the established average used in the JBRS Report, 2011.

Table 25

General District Courts

2011 New Criminal Caseload by District with State Rankings

District	New Criminal Cases	State Rank	Criminal Hearings Held	State Rank	Criminal Cases Per Judge	State Rank	Criminal Hearings Per Judge	State Rank
1	10,369	19	27,904	17	2,592	26	6,976	20
2	22,096	3	43,918	7	3,683	12	7,320	19
2A	2,406	32	4,784	32	2,406	28	4,784	31
3	8,145	24	19,418	24	2,715	24	6,473	25
4	20,223	5	47,724	6	3,371	17	7,954	15
5	6,385	26	17,592	25	2,128	29	5,864	28
6	5,930	28	17,142	26	1,977	30	5,714	29
7	14,827	11	37,547	10	3,707	10	9,387	10
8	10,118	20	30,823	15	3,373	16	10,274	6
9	11,670	16	27,291	18	3,890	8	9,097	11
10	8,717	23	19,921	23	2,906	21	6,640	22
11	8,907	22	23,417	22	4,454	5	11,709	5
12	15,461	10	39,850	8	3,865	9	9,963	7
13	20,141	6	52,830	3	2,877	22	7,547	18
14	13,173	14	33,544	12	3,293	18	8,386	14
15	25,171	2	57,149	2	4,195	7	9,525	9
16	14,035	13	30,993	14	3,509	14	7,748	17
17	5,787	29	14,917	29	1,929	31	4,972	30
18	5,309	30	11,997	30	2,655	25	5,999	27
19	25,846	1	64,914	1	2,585	27	6,491	24
20	11,041	18	26,804	19	2,760	23	6,701	21
21	3,633	31	7,474	31	1,817	32	3,737	32
22	11,873	15	24,486	21	5,937	1	12,243	3
23	17,233	8	32,560	13	3,447	15	6,512	23
24	14,761	12	34,445	11	3,690	11	8,611	12
25	11,046	17	25,473	20	2,762	20	6,368	26
26	21,178	4	48,530	5	5,295	2	12,133	4
27	17,222	9	39,531	9	4,306	6	9,883	8
28	7,091	25	16,923	27	3,546	13	8,462	13
29	9,110	21	27,975	16	4,555	3	13,988	1
30	6,026	27	15,781	28	3,013	19	7,891	16
31	18,122	7	49,660	4	4,531	4	12,415	2
Total	403,052		973,317					
State Average***					3,036		7,183	

***State average is the established average used in the JBRS Report, 2011.

GENERAL DISTRICT COURTS

Table 26

General District Courts

2011 New Traffic Caseload by District with State Rankings*

District	New Traffic Cases**	State Rank	Traffic Hearings Held	State Rank	Traffic Cases** Per Judge	State Rank	Traffic Hearings Per Judge	State Rank
1	30,930	19	51,796	19	7,733	21	12,949	23
2	55,857	4	88,798	6	9,310	15	14,800	17
2A	13,738	29	19,217	31	13,738	4	19,217	8
3	14,549	27	29,436	26	4,850	31	9,812	31
4	44,366	11	74,701	9	7,394	23	12,450	25
5	27,479	23	48,428	21	9,160	17	16,143	14
6	73,531	2	101,627	3	24,510	1	33,876	1
7	28,684	20	51,134	20	7,171	25	12,784	24
8	27,236	24	45,649	22	9,079	18	15,216	15
9	33,259	18	54,414	16	11,086	12	18,138	10
10	27,718	21	44,675	24	9,239	16	14,892	16
11	37,684	14	56,218	14	18,842	2	28,109	2
12	53,346	6	90,828	5	13,337	6	22,707	3
13	51,303	8	91,978	4	7,329	24	13,140	21
14	51,477	7	80,150	8	12,869	9	20,038	6
15	65,768	3	110,572	2	10,961	13	18,429	9
16	34,508	17	52,350	18	8,627	20	13,088	22
17	39,955	13	58,059	12	13,318	7	19,353	7
18	12,218	30	23,269	29	6,109	29	11,635	27
19	141,428	1	202,539	1	14,143	3	20,254	5
20	40,111	12	52,967	17	10,028	14	13,242	20
21	8,050	32	13,693	32	4,025	32	6,847	32
22	14,860	26	24,292	28	7,430	22	12,146	26
23	35,439	16	56,714	13	7,088	27	11,343	28
24	27,563	22	45,214	23	6,891	28	11,304	29
25	36,249	15	54,708	15	9,062	19	13,677	19
26	45,032	10	64,636	11	11,258	11	16,159	13
27	54,136	5	81,193	7	13,534	5	20,298	4
28	25,891	25	36,231	25	12,946	8	18,116	11
29	14,336	28	28,658	27	7,168	26	14,329	18
30	11,949	31	21,225	30	5,975	30	10,613	30
31	46,916	9	69,974	10	11,729	10	17,494	12
Total	1,225,566		1,925,343					
State Average***					16,112		16,183	

**Caseloads have been adjusted and do not include Prepaid Traffic Infractions.

***State average is the established average used in the JBRS Report, 2011.

Table 27

General District Courts

2011 New Civil Caseload by District with State Rankings

District	New Civil Cases	State Rank	Civil Hearings Held	State Rank	Civil Cases Per Judge	State Rank	Civil Hearings Per Judge	State Rank
1	40,288	7	28,318	6	10,072	3	7,080	3
2	81,849	1	56,297	1	13,642	1	9,383	1
2A	5,543	31	3,359	32	5,543	19	3,359	23
3	18,334	17	11,515	21	6,111	16	3,838	19
4	59,734	3	42,173	3	9,956	4	7,029	4
5	15,950	21	12,134	18	5,317	20	4,045	17
6	8,780	27	6,416	28	2,927	31	2,139	31
7	38,676	8	23,041	12	9,669	5	5,760	12
8	26,404	14	17,620	15	8,801	9	5,873	11
9	20,522	16	11,535	20	6,841	13	3,845	18
10	12,295	24	8,692	22	4,098	24	2,897	27
11	13,087	22	8,676	23	6,544	14	4,338	14
12	35,399	9	25,039	10	8,850	7	6,260	8
13	64,324	2	49,727	2	9,189	6	7,104	2
14	40,533	6	26,365	8	10,133	2	6,591	6
15	51,007	4	36,254	4	8,501	11	6,042	10
16	34,801	11	24,377	11	8,700	10	6,094	9
17	8,984	26	6,684	27	2,995	30	2,228	30
18	10,165	25	7,534	25	5,083	21	3,767	20
19	46,560	5	34,620	5	4,656	22	3,462	22
20	16,507	18	13,133	16	4,127	23	3,283	24
21	7,773	28	5,284	29	3,887	27	2,642	28
22	12,396	23	8,526	24	6,198	15	4,263	16
23	28,159	13	21,600	13	5,632	18	4,320	15
24	24,168	15	18,739	14	6,042	17	4,685	13
25	16,325	19	12,619	17	4,081	25	3,155	25
26	35,247	10	27,805	7	8,812	8	6,951	5
27	16,306	20	11,771	19	4,077	26	2,943	26
28	6,394	30	4,800	30	3,197	29	2,400	29
29	7,634	29	7,189	26	3,817	28	3,595	21
30	4,631	32	4,019	31	2,316	32	2,010	32
31	33,153	12	25,181	9	8,288	12	6,295	7
Total	841,928		601,042					
State Average***					6,568		5,781	

***State average is the established average used in the JBRS Report, 2011.

Table 28
General District Courts
Judges
As of December 31, 2011

District	Judge	Term
1	Philip J. Infantino III	4/1/2009-3/31/2015
	Colon H. Whitehurst	8/1/2008-7/31/2014
	David L. Williams	7/1/2009-6/30/2015
	Timothy S. Wright	7/1/2009-6/30/2015
2	Calvin R. Depew Jr.	7/1/2011-6/30/2017
	Steven C. Frucci	4/1/2009-3/31/2015
	Teresa N. Hammons	4/1/2010-3/31/2016
	Pamela E. Hutchens	4/1/2009-3/31/2015
	Robert L. Simpson Jr.	3/1/2009-2/28/2015
	Gene A. Woolard	6/1/2010-5/31/2016
2A	Gordon S. Vincent	7/1/2006-6/30/2012
3	Roxie O. Holder	10/1/2006-9/30/2012
	Douglas B. Ottinger	2/1/2010-1/31/2016
	Morton V. Whitlow	2/1/2010-1/31/2016
4	S. Clark Daugherty	5/1/2006-4/30/2012
	Ray W. Dezern Jr.	1/1/2008-12/31/2013
	Gwendolyn J. Jackson	3/1/2009-2/28/2015
	James S. Mathews	5/1/2010-4/30/2016
	Joseph A. Migliozi	2/1/2010-1/31/2016
	Bruce A. Wilcox	4/1/2009-3/31/2015
5	Alfred W. Bates III	7/1/2011-6/30/2017
	W. Parker Councill	5/1/2008-4/30/2014
	James A. Moore	7/1/2007-6/30/2013
6	Stephen D. Bloom	2/1/2008-1/31/2014
	Theodore J. Burr Jr.	7/1/2007-6/30/2013
7	Richard C. Kerns	7/1/2006-6/30/2012
	Alfred O. Masters Jr.	4/1/2009-3/31/2015
	Gary A. Mills	4/1/2009-3/31/2015
	Bryant L. Sugg	7/1/2009-6/30/2015
8	M. Woodrow Griffin Jr.	4/1/2009-3/31/2015
	Tonya Henderson-Stith	5/1/2009-4/30/2015
	Albert W. Patrick III	2/1/2008-1/31/2014
9	Colleen K. Killilea	11/1/2009-10/31/2015
	Michael E. McGinty	7/1/2007-6/30/2013
	Jeffrey W. Shaw	2/1/2010-1/31/2016
10	Charles H. Warren	4/16/2010-4/15/2016
	J. William Watson Jr.	2/1/2010-1/31/2016
	Robert G. Woodson Jr.	6/1/2007-5/31/2013
11	Lucretia A. Carrico	2/1/2010-1/31/2016

Table 28 (continued)

District	Judge	Term
12	Philip V. Daffron	4/1/2006-3/31/2012
	Pamela O'Berry	4/1/2009-3/31/2015
	James J. O'Connell III	7/1/2011-6/30/2017
	Thomas L. Vaughn	7/1/2006-6/30/2012
13	David Eugene Cheek Sr.	7/1/2010-6/30/2016
	Barbara J. Gaden	4/16/2007-4/15/2013
	Phillip L. Hairston	2/1/2011-1/31/2017
	Birdie Hairston Jamison	12/1/2009-11/30/2015
	Robert A. Pustilnik	5/1/2008-4/30/2014
	Gregory L. Rupe	2/1/2009-1/31/2015
	Joi Jeter Taylor	4/16/2010-4/15/2016
14	Mary B. Malveaux	7/1/2011-6/30/2017
	John Marshall	4/1/2011-3/31/2017
	L. Neil Steverson	2/1/2006-1/31/2012
	Archer L. Yeatts III	7/1/2007-6/30/2013
15	Frank L. Benser	7/1/2011-6/30/2017
	Michael E. Levy	2/1/2009-1/31/2015
	Ricardo Rigual	7/1/2011-6/30/2017
	John R. Stevens	4/1/2006-3/31/2012
	Peter L. Tribble	7/1/2011-6/30/2017
	Gordon A. Wilkins	4/1/2011-3/31/2017
16	William G. Barkley	5/1/2008-4/30/2014
	Edward K. Carpenter	6/1/2010-5/31/2016
	Robert H. Downer Jr.	6/1/2007-5/31/2013
	Roger L. Morton	2/1/2011-1/31/2017
17	Karen A. Henenberg	3/1/2007-2/28/2013
	Thomas J. Kelley Jr.	2/1/2007-1/31/2013
	Richard J. McCue	7/1/2007-6/30/2013
18	Donald M. Haddock Jr.	5/1/2008-4/30/2014
	Becky J. Moore	2/1/2010-1/31/2016
19	Penney S. Azcarate	5/1/2008-4/30/2014
	Michael Joseph Cassidy	2/1/2011-1/31/2017
	Stewart P. Davis	3/15/2006-3/14/2012
	Thomas E. Gallahue	4/1/2010-3/31/2016
	Lisa A. Mayne	10/1/2006-9/30/2012
	Donald P. McDonough	7/1/2006-6/30/2012
	William J. Minor Jr.	4/1/2009-3/31/2015
	Mitchell I. Mutnick	5/1/2010-4/30/2016
	Ian M. O'Flaherty	7/1/2008-6/30/2014
	Mark C. Simmons	4/1/2006-3/31/2012
20	J. Gregory Ashwell	7/1/2011-6/30/2017
	J. Frank Buttery Jr.	7/1/2006-6/30/2012
	Julia Taylor Cannon	4/1/2010-3/31/2016
	Dean S. Worcester	3/1/2008-2/28/2014
21	R. Morgan Armstrong	7/1/2007-6/30/2013
	Edwin A. Gendron Jr.	3/1/2011-2/28/2017

GENERAL DISTRICT COURTS

Table 28 (Continued)

District	Judge	Term
22	George A. Jones Jr.	4/1/2006-3/31/2012
	M. Lee Stilwell Jr.	3/1/2010-2/28/2016
23	Francis W. Burkart III	11/1/2008-10/31/2014
	J. Christopher Clemens	2/1/2009-1/31/2015
	M. Frederick King	4/1/2011-3/31/2017
	Vincent A. Lilley	7/1/2006-6/30/2012
	Jacqueline F. Ward Talevi	2/1/2009-1/31/2015
24	Harold A. Black	4/1/2010-3/31/2016
	R. Edwin Burnette Jr.	8/1/2007-7/31/2013
	Joseph M. Serkes	2/1/2006-1/31/2012
25	Louis K. Campbell	7/1/2006-6/30/2012
	William D. Heatwole	7/1/2011-6/30/2017
	John Gregory Mooney	2/16/2007-2/15/2013
	Gordon F. Saunders	7/1/2010-6/30/2016
26	Richard A. Claybrook Jr.	3/1/2009-2/28/2015
	W. Dale Houff	4/16/2006-4/15/2012
	Amy B. Tisinger	7/1/2009-6/30/2015
	David Shaw Whitacre	4/1/2009-3/31/2015
27	J. D. Bolt	7/1/2006-6/30/2012
	Randal J. Duncan	5/1/2010-4/30/2016
	R. Glennwood Lookabill	4/1/2006-3/31/2012
	Gino W. Williams	4/1/2009-3/31/2015
28	Sage B. Johnson	2/1/2006-1/31/2012
	Joseph S. Tate	9/1/2010-8/31/2016
29	Jack S. Hurley Jr.	7/1/2011-6/30/2017
	Richard C. Patterson	4/1/2009-3/31/2015
30	R. Larry Lewis	3/1/2009-2/28/2015
31	Charles F. Sievers	7/1/2011-6/30/2017
	Steven S. Smith	2/1/2010-1/31/2016
	Peter W. Steketee	7/1/2011-6/30/2017
	Wenda K. Travers	10/1/2008-9/30/2014

**TOTAL
JUDGES**

116

Table 28 (Continued)

General District Court Judges Leaving the Bench in 2011

	District	
Honorable William R. Savage III	5	Elected to Circuit Court July 1, 2011
Honorable J. Larry Palmer	6	Retired January 31, 2011
Honorable Paul W. Cella	11	Elected to Circuit Court July 1, 2011
Honorable Thomas L. Murphey	12	Retired March 31, 2011
Honorable James Stephen Yoffy	14	Elected to Circuit Court July 1, 2011
Honorable Sarah L. Deneke	15	Elected to Circuit Court July 1, 2011
Honorable Dorothy H. Clarke	17	Retired April 30, 2011
Honorable F. Patrick Yeatts	24	Elected to Circuit Court July 1, 2011
Honorable Chadwick S. Dotson	30	Elected to Circuit Court July 1, 2011

General District Court Judges Taking the Bench in 2011

	District	
Honorable Alfred W. Bates III	5	Effective July 1, 2011
Honorable James J. O'Connell III	12	Effective July 1, 2011
Honorable Mary B. Malveaux	14	Effective July 1, 2011
Honorable Ricardo Rigual	15	Effective July 1, 2011

*Chief Judges of the Commonwealth of Virginia
As of December 31, 2011*

District		District	
1	Colon H. Whitehurst	16	Robert H. Downer Jr.
2	Gene A. Woolard	17	Richard J. McCue
2A	Gordon S. Vincent	18	Becky J. Moore
3	Roxie O. Holder	19	Donald P. McDonough
4	Bruce A. Wilcox	20	Dean S. Worcester
5	James A. Moore	21	R. Morgan Armstrong
6	Theodore J. Burr Jr.	22	George A. Jones Jr.
7	Richard C. Kerns	23	Jacqueline F. Ward Talevi
8	M. Woodrow Griffin Jr.	24	Joseph M. Serkes
9	Michael E. McGinty	25	John Gregory Mooney
10	Robert G. Woodson Jr.	26	Richard A. Claybrook Jr.
11	Lucretia A. Carrico	27	Gino W. Williams
12	Philip V. Daffron	28	Joseph S. Tate
13	Robert A. Pustilnik	29	Jack S. Hurley Jr.
14	Archer L. Yeatts III	30	R. Larry Lewis
15	Frank L. Benser	31	Charles F. Sievers



2011 The Judiciary's Year in Review

Virginia

*Juvenile & Domestic Relations
District Courts*

JUVENILE & DOMESTIC RELATIONS DISTRICT COURTS

Jurisdiction and Structure

Juvenile and domestic relations district courts have jurisdiction over all proceedings involving the custody, visitation, support, control or disposition of a child who is abused, neglected, in need of services, abandoned, truant, a runaway, a delinquent, violates traffic laws, requires commitment for mental illness or consent to medical treatment. These courts also have jurisdiction

over the parents, guardians and legal custodians of such children and over other adults involved in foster care proceedings, paternity determinations, domestic violence, offenses against family or household members, and spousal support matters

Statistical Summary

The court case filing information for the last two years is summarized in Table 29. The detailed information for the year is included in this section.

Table 29

Juvenile & Domestic Relations District Courts

2010-2011 Percent Change in Caseloads

District	New Cases			Hearings		
	2010	2011	Percent Change	2010	2011	Percent Change
1	14,167	14,529	2.6%	34,702	34,574	-0.4%
2	29,052	28,955	-0.3%	64,600	66,011	2.2%
2A	3,097	3,363	8.6%	6,213	6,379	2.7%
3	12,181	11,255	-7.6%	26,959	24,956	-7.4%
4	23,060	21,976	-4.7%	55,965	53,140	-5.0%
5	9,211	9,091	-1.3%	21,561	21,484	-0.4%
6	8,590	8,471	-1.4%	21,986	21,886	-0.5%
7	14,110	14,923	5.8%	36,375	38,927	7.0%
8	12,936	12,218	-5.6%	30,523	30,636	0.4%
9	14,396	14,324	-0.5%	33,318	33,578	0.8%
10	12,818	12,536	-2.2%	30,078	28,919	-3.9%
11	9,689	9,626	-0.7%	24,538	23,471	-4.3%
12	23,790	22,659	-4.8%	51,576	50,755	-1.6%
13	16,662	16,947	1.7%	41,115	41,631	1.3%
14	21,557	21,064	-2.3%	52,309	51,608	-1.3%
15	36,279	36,465	0.5%	79,454	76,787	-3.4%
16	20,292	20,832	2.7%	52,651	51,582	-2.0%
17	4,871	4,878	0.1%	13,191	13,334	1.1%
18	5,275	5,618	6.5%	12,619	12,497	-1.0%
19	26,662	27,215	2.1%	57,127	57,108	0.0%
20	12,112	11,903	-1.7%	28,533	26,939	-5.6%
21	8,535	8,310	-2.6%	19,019	18,382	-3.3%
22	13,888	13,990	0.7%	31,305	30,980	-1.0%
23	18,022	17,597	-2.4%	43,427	41,875	-3.6%
24	21,469	21,844	1.7%	48,122	48,276	0.3%
25	17,992	18,070	0.4%	39,094	39,938	2.2%
26	24,712	25,127	1.7%	52,180	52,162	0.0%
27	18,962	19,518	2.9%	42,253	43,144	2.1%
28	9,957	9,896	-0.6%	22,272	22,602	1.5%
29	9,939	10,002	0.6%	24,944	24,093	-3.4%
30	7,839	7,655	-2.3%	20,967	20,969	0.0%
31	20,169	20,067	-0.5%	49,071	49,676	1.2%
Total	502,291	500,924	-0.3%	1,168,047	1,158,299	-0.8%
Urban	242,514	239,901	-1.1%	569,559	560,648	-1.6%
Rural	259,777	261,023	0.5%	598,488	597,651	-0.1%

Urban districts are 1, 2, 3, 4, 7, 8, 12, 13, 14, 17, 18, 19, 23, 31

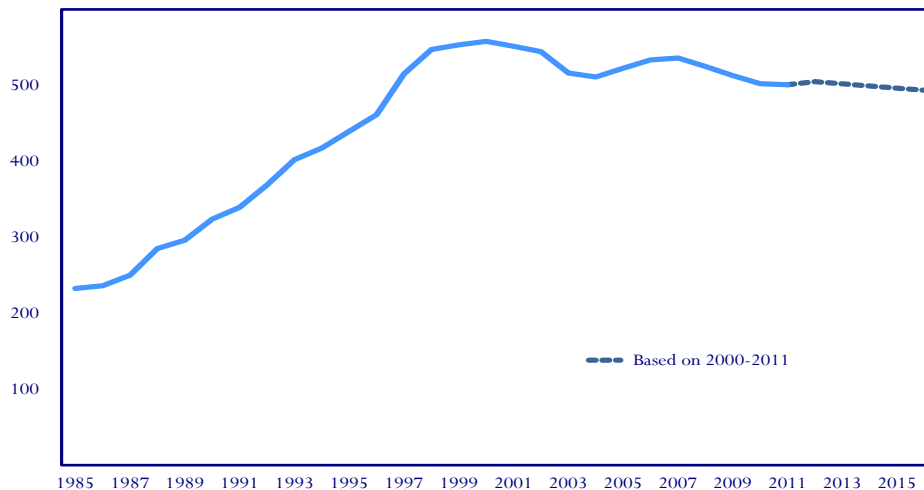
Table 30
Juvenile & Domestic Relations District Courts
 2002-2011 Historical Summary

Year	Judges	Percent Change	New Cases	Percent Change	Hearings	Percent Change	Cases Concluded	Percent Change
2002	110.00	0.0%	544,376	-1.3%	1,206,353	-0.4%	575,084	0.7%
2003	110.00	0.0%	516,309	-5.2%	1,169,081	-3.1%	543,931	-5.4%
2004	110.00	0.0%	511,078	-1.0%	1,154,381	-1.3%	524,124	-3.6%
2005	113.00	2.7%	522,621	2.3%	1,186,473	2.8%	539,837	3.0%
2006	117.00	3.5%	533,546	2.1%	1,217,689	2.6%	540,421	0.1%
2007	117.00	0.0%	536,114	0.5%	1,233,961	1.3%	540,234	0.0%
2008	117.00	0.0%	525,029	-2.1%	1,217,147	-1.4%	534,434	-1.1%
2009	117.00	0.0%	512,991	-2.3%	1,185,697	-2.6%	519,514	-2.8%
2010	116.00	-0.9%	502,291	-2.1%	1,168,047	-1.5%	509,720	-1.9%
2011	116.00	0.0%	500,924	-0.3%	1,158,299	-0.8%	509,129	-0.1%

*Funded positions as of July 1, 2011.

Year	Juvenile Cases		Domestic Relations Cases	
	Cases Commenced	Percent Change	Cases Commenced	Percent Change
2002	300,705	-1.2%	243,671	-1.5%
2003	275,191	-8.5%	241,118	-1.0%
2004	265,958	-3.4%	245,120	1.7%
2005	276,803	4.1%	245,818	0.3%
2006	284,048	2.6%	249,498	1.5%
2007	282,585	-0.5%	253,529	1.6%
2008	281,438	-0.4%	243,591	-3.9%
2009	269,727	-4.2%	243,264	-0.1%
2010	256,290	-5.0%	246,001	1.1%
2011	255,974	-0.1%	244,950	-0.4%

Display 13
Juvenile & Domestic Relations District Courts
 Trends in New Cases
 (Cases in Thousands)



Display 14

Juvenile & Domestic Relations District Courts
1985-2011 New and Concluded Cases Per Judge

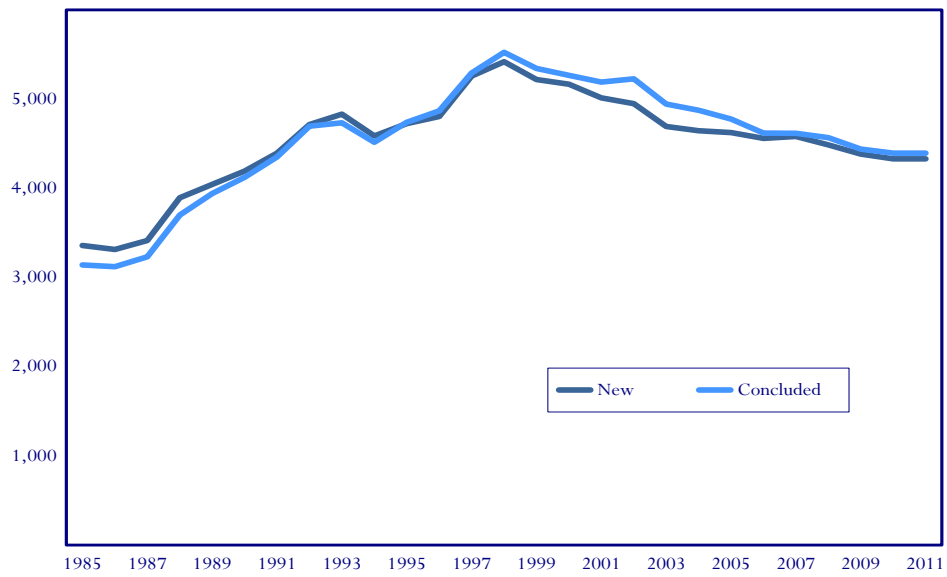


Table 31
Juvenile & Domestic Relations District Courts
 2011 Caseload Statistics

District	Judges	New Cases				Percent Change	Total Hearings	Percent Change	Cases/Judge	Hearings/Judge
		Juvenile	Domestic Relations	Total	Percent Change					
2A	1.00	1,661	1,702	3,363	-10.9%	6,379	-15.4%	3,363	6,379	
5	2.00	3,914	5,177	9,091	2.8%	21,484	0.3%	4,546	10,742	
6	2.00	4,209	4,262	8,471	-2.0%	21,886	0.4%	4,236	10,943	
9	3.00	8,067	6,257	14,324	-2.9%	33,578	2.5%	4,775	11,193	
10	3.00	5,747	6,789	12,536	-7.1%	28,919	-5.6%	4,179	9,640	
11	2.00	4,612	5,014	9,626	-12.0%	23,471	-10.4%	4,813	11,736	
15	7.00	20,404	16,061	36,465	-5.3%	76,787	-7.9%	5,209	10,970	
16	4.00	10,488	10,344	20,832	-2.3%	51,582	-3.6%	5,208	12,896	
20	3.00	6,568	5,335	11,903	-4.4%	26,939	-9.8%	3,968	8,980	
21	2.00	3,448	4,862	8,310	-4.5%	18,382	-1.5%	4,155	9,191	
22	3.00	6,585	7,405	13,990	-2.1%	30,980	-3.5%	4,663	10,327	
24	5.00	10,860	10,984	21,844	-1.2%	48,276	-0.6%	4,369	9,655	
25	4.00	9,573	8,497	18,070	0.3%	39,938	3.5%	4,518	9,985	
26	5.00	13,415	11,712	25,127	-0.1%	52,162	0.6%	5,025	10,432	
27	4.00	10,396	9,122	19,518	0.4%	43,144	3.1%	4,880	10,786	
28	2.00	6,025	3,871	9,896	-5.5%	22,602	-5.1%	4,948	11,301	
29	2.00	5,338	4,664	10,002	-2.8%	24,093	-7.3%	5,001	12,047	
30	2.00	4,224	3,431	7,655	-1.4%	20,969	0.4%	3,828	10,485	
Rural	56.00	135,534	125,489	261,023	-3.0%	591,571	-2.9%	4,661	10,564	
1	3.00	7,091	7,438	14,529	1.5%	34,574	-1.0%	4,843	11,525	
2	7.00	14,957	13,998	28,955	-3.2%	66,011	-4.0%	4,136	9,430	
3	3.00	4,501	6,754	11,255	-5.3%	24,956	-6.0%	3,752	8,319	
4	5.00	9,090	12,886	21,976	1.2%	53,140	-0.9%	4,395	10,628	
7	4.00	6,689	8,234	14,923	3.7%	38,927	2.9%	3,731	9,732	
8	3.00	6,573	5,645	12,218	8.1%	30,636	7.0%	4,073	10,212	
12	5.00	12,281	10,378	22,659	-6.4%	50,755	-3.1%	4,532	10,151	
13	5.00	7,717	9,230	16,947	1.9%	41,631	0.2%	3,389	8,326	
14	4.00	10,642	10,422	21,064	-6.3%	51,608	-6.8%	5,266	12,902	
17	2.00	3,106	1,772	4,878	-0.6%	13,334	4.7%	2,439	6,667	
18	2.00	3,221	2,397	5,618	-0.4%	12,497	2.5%	2,809	6,249	
19	8.00	15,420	11,795	27,215	-4.6%	57,108	-2.0%	3,402	7,139	
23	4.00	8,383	9,214	17,597	-6.3%	41,875	-8.8%	4,399	10,469	
31	5.00	10,769	9,298	20,067	3.9%	49,676	4.7%	4,013	9,935	
Urban	60.00	120,440	119,461	239,901	-1.7%	566,728	-1.6%	3,998	9,445	
Total	116.00	255,974	244,950	500,924	-2.4%	1,158,299	-2.3%		9,985	

Table 32

Juvenile & Domestic Relations District Courts

2011 New Caseload by District with State Rankings

District	Judges	Total Cases	State Rank	Total Hearings	State Rank	Cases/Judge	State Rank
1	3.00	14,529	16	34,574	16	4,843	8
2	7.00	28,955	2	66,011	2	4,136	21
2A	1.00	3,363	32	6,379	32	3,363	30
3	3.00	11,255	22	24,956	22	3,752	26
4	5.00	21,976	6	53,140	4	4,395	16
5	2.00	9,091	26	21,484	27	4,546	12
6	2.00	8,471	27	21,886	26	4,236	18
7	4.00	14,923	15	38,927	15	3,731	27
8	3.00	12,218	20	30,636	19	4,073	22
9	3.00	14,324	17	33,578	17	4,775	10
10	3.00	12,536	19	28,919	20	4,179	19
11	2.00	9,626	25	23,471	24	4,813	9
12	5.00	22,659	5	50,755	8	4,532	13
13	5.00	16,947	14	41,631	13	3,389	29
14	4.00	21,064	8	51,608	6	5,266	1
15	7.00	36,465	1	76,787	1	5,209	2
16	4.00	20,832	9	51,582	7	5,208	3
17	2.00	4,878	31	13,334	30	2,439	32
18	2.00	5,618	30	12,497	31	2,809	31
19	8.00	27,215	3	57,108	3	3,402	28
20	3.00	11,903	21	26,939	21	3,968	24
21	2.00	8,310	28	18,382	29	4,155	20
22	3.00	13,990	18	30,980	18	4,663	11
23	4.00	17,597	13	41,875	12	4,399	15
24	5.00	21,844	7	48,276	10	4,369	17
25	4.00	18,070	12	39,938	14	4,518	14
26	5.00	25,127	4	52,162	5	5,025	4
27	4.00	19,518	11	43,144	11	4,880	7
28	2.00	9,896	24	22,602	25	4,948	6
29	2.00	10,002	23	24,093	23	5,001	5
30	2.00	7,655	29	20,969	28	3,828	25
31	5.00	20,067	10	49,676	9	4,013	23
Total	116.00	500,924		1,158,299			
State Average						4,330	
Urban Average						4,042	
Rural Average						4,639	

Table 33

Juvenile & Domestic Relations District Courts
2011 New Juvenile Caseload by District with State Rankings

District	New Juvenile Cases	State Rank	Juvenile Hearings Held	State Rank	Juvenile Cases Per Judge	State Rank	Juvenile Hearings Per Judge	Juvenile Hearings Per Case
1	7,091	16	16,484	17	2,364	11	5,495	2.32
2	14,957	3	32,990	2	2,137	18	4,713	2.21
2A	1,661	32	2,974	32	1,661	28	2,974	1.79
3	4,501	23	9,714	27	1,500	32	3,238	2.16
4	9,090	12	20,015	12	1,818	25	4,003	2.20
5	3,914	28	8,805	28	1,957	22	4,403	2.25
6	4,209	27	10,699	25	2,105	20	5,350	2.54
7	6,689	17	18,429	14	1,672	27	4,607	2.76
8	6,573	19	14,309	20	2,191	14	4,770	2.18
9	8,067	13	18,580	13	2,689	3	6,193	2.30
10	5,747	21	12,946	21	1,916	24	4,315	2.25
11	4,612	25	10,517	26	2,306	12	5,259	2.28
12	12,281	5	28,134	4	2,456	9	5,627	2.29
13	7,717	15	17,903	16	1,543	31	3,581	2.32
14	10,642	6	25,701	7	2,661	6	6,425	2.42
15	20,404	1	41,512	1	2,915	2	5,930	2.03
16	10,488	9	25,425	8	2,622	7	6,356	2.42
17	3,106	31	8,586	29	1,553	30	4,293	2.76
18	3,221	30	7,343	30	1,611	29	3,672	2.28
19	15,420	2	32,048	3	1,928	23	4,006	2.08
20	6,568	18	14,882	19	2,189	15	4,961	2.27
21	3,448	29	6,493	31	1,724	26	3,247	1.88
22	6,585	20	15,072	18	2,195	13	5,024	2.29
23	8,383	14	18,370	15	2,096	21	4,593	2.19
24	10,860	8	22,009	9	2,172	16	4,402	2.03
25	9,573	11	20,377	11	2,393	10	5,094	2.13
26	13,415	4	27,779	5	2,683	4	5,556	2.07
27	10,396	10	21,906	10	2,599	8	5,477	2.11
28	6,025	22	12,689	22	3,013	1	6,345	2.11
29	5,338	24	12,156	23	2,669	5	6,078	2.28
30	4,224	26	11,036	24	2,112	19	5,518	2.61
31	10,769	7	25,974	6	2,154	17	5,195	2.41
Total	255,974		571,857					
State Average					2,209		4,989	

Table 34

Juvenile & Domestic Relations District Courts
 2011 New Domestic Relations Caseload by District with State Rankings

District	New Domestic Relations Cases	State Rank	Domestic Relations Hearings Held	State Rank	Domestic Relations Cases Per Judge	State Rank	Domestic Relations Hearings Per Judge	Domestic Relations Hearings Per Case
1	7,438	16	18,090	16	2,479	6	6,030	2.43
2	13,998	2	33,021	3	2,000	22	4,717	2.36
2A	1,702	32	3,405	32	1,702	29	3,405	2.00
3	6,754	19	15,242	20	2,251	15	5,081	2.26
4	12,886	3	33,125	2	2,577	4	6,625	2.57
5	5,177	23	12,679	23	2,589	2	6,340	2.45
6	4,262	27	11,187	27	2,131	17	5,594	2.62
7	8,234	15	20,498	14	2,059	21	5,125	2.49
8	5,645	21	16,327	17	1,882	24	5,442	2.89
9	6,257	20	14,998	21	2,086	19	4,999	2.40
10	6,789	18	15,973	18	2,263	14	5,324	2.35
11	5,014	24	12,954	22	2,507	5	6,477	2.58
12	10,378	8	22,621	12	2,076	20	4,524	2.18
13	9,230	11	23,728	9	1,846	26	4,746	2.57
14	10,422	7	25,907	6	2,606	1	6,477	2.49
15	16,061	1	35,275	1	2,294	12	5,039	2.20
16	10,344	9	26,157	5	2,586	3	6,539	2.53
17	1,772	31	4,748	31	886	32	2,374	2.68
18	2,397	30	5,154	30	1,199	31	2,577	2.15
19	11,795	4	25,060	7	1,474	30	3,133	2.12
20	5,335	22	12,057	24	1,778	27	4,019	2.26
21	4,862	25	11,889	26	2,431	8	5,945	2.45
22	7,405	17	15,908	19	2,468	7	5,303	2.15
23	9,214	12	23,505	11	2,304	11	5,876	2.55
24	10,984	6	26,267	4	2,197	16	5,253	2.39
25	8,497	14	19,561	15	2,124	18	4,890	2.30
26	11,712	5	24,383	8	2,342	9	4,877	2.08
27	9,122	13	21,238	13	2,281	13	5,310	2.33
28	3,871	28	9,913	29	1,936	23	4,957	2.56
29	4,664	26	11,937	25	2,332	10	5,969	2.56
30	3,431	29	9,933	28	1,716	28	4,967	2.90
31	9,298	10	23,702	10	1,860	25	4,740	2.55
Total	244,950		586,442					
State Average					2,121		5,081	

Table 35

Juvenile & Domestic Relations District Courts
 2011 Caseload Statistics by Detailed Case Type*

Juvenile Cases

	Hearing Results				Transactions	Hearings Held	Cases Concluded
	New Cases	Final Judgement	Waived/ CV/ Removed	Continued			
Abuse and Neglect	4,615	4,640	0	11,433	16,073	16,698	4,640
Capias	921	980	0	1,612	2,592	2,737	980
Child at Risk	966	1,008	0	1,813	2,821	3,073	1,008
Child Need Services	35	21	0	62	83	260,357	21
Custody/Visitation	134,633	133,637	0	136,375	270,012	59,684	133,637
Delinquency Felony	12,115	12,191	4	41,249	53,440	131,857	12,195
Delinquency Misdemeanor	38,196	38,631	118	87,477	126,108	146	38,749
Emancipation	93	94	0	54	148	478	94
Entrustment Agreement	337	346	0	120	466	6,830	346
Foster Care Review	4,967	5,006	0	902	5,908	2,505	5,006
Initial Foster Care Review	1,908	1,888	0	377	2,265	57	1,888
Judicial Bypass	57	56	0	10	66	155	56
Juvenile Support	62	74	0	79	153	6,142	74
Paternity	3,844	3,867	0	3,253	7,120	3,713	3,867
Permanency Planning	2,778	2,777	0	859	3,636	422	2,777
Relief of Custody	269	281	0	211	492	6,916	281
Remand Custody	7147	7147	0	67	7214	5656	7147
Remand Visitation	5,948	5,955	0	12	5,967	11,768	5,955
Show Cause	4,512	4,770	0	6,868	11,638	29,260	4,770
Status	11,704	11,610	119	17,749	29,359	3,501	11,729
Termination Parental Rights	1,582	1,672	0	1,606	3,278	37,086	1,672
Truancy/Runaway	3	0	0	5	5		0
	258,239	254,842	3,808	327,646	582,488	589,041	258,650

Domestic Relations Cases

	Hearing Results				Transactions	Hearings Held	Cases Concluded
	New Cases	Final Judgement	Waived/ CV/ Removed	Continued			
Bond Forfeiture	76	58	0	79	137	137	58
Capias	16,445	19,639	1	30,608	50,248	50,247	19,640
Civil Support	72,800	73,154	0	57,834	130,988	130,988	73,154
Criminal Support	53	105	0	118	223	223	105
Felonies	14,852	14,540	301	30,126	44,967	44,666	14,841
Misdemeanors	55,716	54,703	0	103,243	157,946	157,946	54,703
Other	2,601	2,602	1	1,355	3,958	3,957	2,603
Remand Support	4,988	4,989	0	18	5,007	5,007	4,989
Restricted License	90	71	0	41	112	112	71
Show Cause	59,658	62,428	3	100,276	162,707	162,704	62,431
Spousal Abuse	17,984	18,092	0	14,567	32,659	32,659	18,092
Total Domestic Relations	245,263	250,381	306	338,265	588,952	588,646	250,687
Total J&DR District	503,502	505,223	4,114	665,911	1,175,248	1,171,134	509,337

* Due to timing, varying reporting and data processing procedures, figures in this table may not be identical to those found in other J&DR tables.

Table 36

Juvenile & Domestic Relations District Courts
 2011 Age of Concluded Cases*

Juvenile Cases

	Days from Offense/File Date to Disposition Date							Total	%	Avg. Days
	0-30	31-60	61-90	91-180	181-365	365+				
Abuse and Neglect	1,258	601	1,389	662	494	231	4,635	2	95	
Capias	316	199	100	144	101	97	957	0	107	
Child at Risk	339	133	173	166	142	60	1,013	0	99	
Criminal Support	9	1	5	3	3	-	21	-	80	
Custody Relief	105	62	57	44	11	2	281	0	60	
Emancipation	21	31	15	24	3	-	94	-	67	
Entrustment Agreement	187	90	32	23	12	8	352	0	51	
Felony	1,570	1,946	1,597	1,935	1,608	3,521	12,177	5	189	
Foster Care Review	2,758	1,700	105	196	172	113	5,044	2	48	
Initial FC Review	1,492	237	41	62	58	15	1,905	1	33	
Judicial Support	2	10	13	33	15	3	76	-	139	
Judicial Bypass	55	-	1	1	-	-	57	-	5	
Misdemeanor	5,375	6,455	5,231	7,173	7,358	7,179	38,771	15	166	
Non-Case	1,330	73	32	36	26	13	1,510	1	17	
Other	8	-	-	-	-	-	8	-	1	
Paternity	596	649	708	1,339	479	100	3,871	2	107	
Permanency Planning	1,489	851	132	163	115	47	2,797	1	50	
Protective Order	75	14	12	14	10	4	129	-	64	
Remand Custody	4,847	1,132	421	242	216	286	7,144	3	45	
Remand Visitation	4,095	1,035	369	124	141	191	5,955	2	39	
Restricted O/L	8	4	1	-	-	-	13	-	21	
Show Cause	1,110	1,192	805	903	507	258	4,775	2	99	
Status	3,802	2,098	1,284	2,053	1,564	932	11,733	5	107	
Termination Parental Rights	362	331	308	445	175	50	1,671	1	97	
Traffic	4,082	5,907	2,580	4,337	4,137	726	21,769	8	107	
Violation of Protective Order	1	-	-	1	-	-	2	-	46	
Visitation	23,765	26,410	21,216	37,159	20,076	5,300	133,926	51	112	
Total Juvenile	59,057	51,161	36,627	57,282	37,423	19,136	260,686	100.0%	112	
Column %	22.7%	19.6%	14.1%	22.0%	14.4%	7.3%	100.0%			
Cumulative %	22.7%	42.3%	56.3%	78.3%	92.7%	100.0%				

Domestic Relations Cases

	Days from Offense/File Date to Disposition Date							Total	%	Avg. Days
	0-30	31-60	61-90	91-180	181-365	365+				
Bond Forfeiture	14	19	3	6	13	2	57	-	110	
Capias	5,463	2,388	2,151	3,596	2,676	2,977	19,251	8	136	
Civil Support	14,807	12,999	11,453	20,043	10,607	3,222	73,131	29	110	
Criminal Support	19	13	4	6	37	26	105	-	208	
Felonies	3,139	4,751	2,919	2,809	824	382	14,824	6	79	
Misdemeanors	8,585	15,423	9,156	8,437	4,266	8,591	54,458	22	129	
Non-Case	1,240	161	59	34	13	6	1,513	1	20	
Other	1,778	331	173	163	98	44	2,587	1	40	
Protective Order	15,880	1,421	582	460	289	116	18,748	7	22	
Remand Support	3,256	805	283	196	170	288	4,998	2	53	
Restricted O/L	27	4	-	-	-	-	31	-	11	
Show Cause	5,436	9,652	8,761	16,866	13,184	8,249	62,148	25	160	
SL/Other	52	15	3	1	-	1	72	-	28	
Status	430	58	16	20	17	16	557	0	38	
Violation of Protective Order	257	13	10	15	7	3	305	0	21	
Total Juvenile	60,383	48,053	35,573	52,652	32,201	23,923	252,785	100.0%	118	
Column %	23.9%	19.0%	14.1%	20.8%	12.7%	9.5%	100.0%			
Cumulative %	23.9%	42.9%	57.0%	77.8%	90.5%	100.0%				

* Due to timing, varying reporting and data processing procedures, figures in this table may not be identical to those found in other J&DR tables.

Table 37
Juvenile & Domestic Relations District Courts
Judges
As of December 31, 2011

District	Judge	Term
1	Rufus A. Banks Jr.	7/1/2011-6/30/2017
	Eileen Anita Olds	7/1/2007-6/30/2013
	Larry D. Willis Sr.	5/1/2011-4/30/2017
2	Gerrit W. Benson	7/1/2011-6/30/2017
	Randall M. Blow	4/1/2007-3/31/2013
	Deborah V. Bryan	5/1/2010-4/30/2016
	Deborah M. Paxson	4/1/2006-3/31/2012
	Deborah L. Rawls	3/1/2009-2/28/2015
	Ramona D. Taylor	4/16/2006-4/15/2012
	Winship C. Tower	7/1/2006-6/30/2012
2A	Croxtton Gordon	2/1/2008-1/31/2014
3	Joel P. Crowe	2/1/2006-1/31/2012
	William S. Moore Jr.	2/1/2010-1/31/2016
	Alotha C. Willis	2/16/2007-2/15/2013
4	Michelle J. Atkins	4/1/2009-3/31/2015
	M. Randolph Carlson II	1/1/2006-12/31/2011
	Lauri D. Hogge	4/1/2007-3/31/2013
	Joseph P. Massey	2/1/2010-1/31/2016
	William P. Williams	6/1/2006-5/31/2012
5	Robert S. Brewbaker Jr.	5/1/2006-4/30/2012
	Alfreda Talton-Harris	4/16/2010-4/15/2016
6	Carson E. Saunders Jr.	6/1/2007-5/31/2013
	Jacqueline R. Waymack	6/1/2009-5/31/2015
7	Ronald Everett Bensten	2/1/2010-1/31/2016
	Thomas W. Carpenter	2/1/2011-1/31/2017
	Judith Anne Kline	4/1/2009-3/31/2015
	Barry G. Logsdon	7/1/2006-6/30/2012
8	Jay Edward Dugger	7/1/2007-6/30/2013
	Deborah S. Roe	5/1/2009-4/30/2015
	Robert B. Wilson V	4/1/2007-3/31/2013
9	Isabel Hall AtLee	2/1/2009-1/31/2015
	George C. Fairbanks IV	2/1/2010-1/31/2016
10	Marvin H. Dunkum	4/1/2010-3/31/2016
	S. Anderson Nelson	4/1/2009-3/31/2015
	Michael M. Rand	2/1/2006-1/31/2012
11	Valentine W. Southall Jr.	10/1/2006-9/30/2012
12	Lynn S. Brice	7/1/2007-6/30/2013
	D. Gregory Carr	2/1/2010-1/31/2016
	Bonnie C. Davis	7/1/2011-6/30/2017
	Jerry Hendrick Jr.	2/1/2008-1/31/2014
	Edward A. Robbins Jr.	2/1/2009-1/31/2015

Table 37 (Continued)

District	Judge	Term
13	J. Stephen Buis	9/1/2007-8/31/2013
	Richard B. Campbell	4/1/2007-3/31/2013
	Marilynn C. Goss	5/1/2008-4/30/2014
	Angela Edwards Roberts	3/1/2008-2/28/2014
	Ashley K. Tunner	5/16/2006-5/15/2012
14	Margaret W. Deglau	7/1/2006-6/30/2012
	Denis F. Soden	7/1/2006-6/30/2012
	Richard S. Wallerstein Jr.	7/1/2006-6/30/2012
	Stuart L. Williams Jr.	5/1/2010-4/30/2016
15	Gerald F. Daltan	5/1/2011-4/30/2017
	Phillip U. Fines	7/1/2007-6/30/2013
	Shannon O. Hoehl	7/1/2011-6/30/2017
	Julian W. Johnson	4/1/2011-3/31/2017
	Patricia Kelly	5/1/2008-4/30/2014
	R. Michael McKenney	5/1/2009-4/30/2015
	David F. Peterson	7/1/2011-6/30/2017
16	Edward DeJ. Berry	2/1/2006-1/31/2012
	Dwight D. Johnson	2/1/2007-1/31/2013
	Frank W. Somerville	7/1/2006-6/30/2012
	Susan L. Whitlock	7/1/2011-6/30/2017
17	George D. Varoutsos	3/16/2010-3/15/2016
	Esther L. Wiggins	2/1/2011-1/31/2017
18	Uley Norris Damiani	2/1/2009-2/1/2015
	Constance H. Frogale	4/1/2011-3/31/2017
19	Gayl Branum Carr	8/1/2006-7/31/2012
	Glenn L. Clayton II	10/1/2006-9/30/2012
	Kimberly J. Daniel	7/1/2007-6/30/2013
	Teena D. Grodner	4/16/2010-4/15/2016
	Helen Leiner	2/1/2007-1/31/2013
	Thomas P. Mann	2/1/2006-1/31/2012
	Janine M. Saxe	2/1/2008-1/31/2014
	Thomas P. Sotelo	2/1/2009-1/31/2015
20	Pamela L. Brooks	7/1/2011-6/30/2017
	Avelina S. Jacob	2/10/2007-2/9/2013
	Jonathan S. Lynn	7/1/2011-6/30/2017
21	Susan N. Deatherage	5/1/2007-4/30/2013
	Junius P. Warren	2/1/2008-1/31/2014
22	Stacey W. Moreau	4/1/2009-3/31/2015
	Sarah A. Rice	2/1/2006-1/31/2012
	Dale M. Wiley	7/1/2010-6/30/2016
23	Joseph P. Bounds	7/1/2006-6/30/2012
	Joseph M. Clarke II	2/1/2007-1/31/2013
	John B. Ferguson	2/1/2006-1/31/2012
	Philip Trompeter	4/16/2009-4/15/2015

Table 37 (Continued)

District	Judge	Term
24	Kenneth W. Farrar	7/1/2011-6/30/2017
	Michael T. Garrett	3/1/2011-2/28/2017
	Robert Louis Harrison Jr.	2/1/2010-1/31/2016
	A. Ellen White	2/1/2007-1/31/2013
25	Laura L. Dascher	5/1/2008-4/30/2014
	Anita D. Filson	4/1/2007-3/31/2013
	Charles L. Ricketts III	2/1/2006-1/31/2012
	Paul A. Tucker	7/1/2011-6/30/2017
26	Elizabeth Kellas Burton	5/1/2010-4/30/2016
	William H. Logan Jr.	7/1/2011-6/30/2017
	Ronald Lewis Napier	7/1/2006-6/30/2012
	Hugh David O'Donnell	4/1/2009-3/31/2015
	William W. Sharp	2/1/2007-1/31/2013
27	H. Lee Chitwood	2/1/2006-1/31/2012
	Marcus H. Long Jr.	4/1/2011-3/31/2017
	Robert C. Viar Jr.	5/1/2009-4/30/2015
28	Charles F. Lincoln	2/1/2006-1/31/2012
	Florence A. Powell	2/1/2008-1/31/2014
29	Henry A. Barringer	4/1/2011-3/31/2017
	Michael J. Bush	4/1/2009-3/31/2015
30	Jeffrey Hamilton	2/1/2008-1/31/2014
	Elizabeth S. Wills	2/1/2007-1/31/2013
31	D. Scott Bailey	2/1/2010-1/31/2016
	William Alan Becker	7/1/2011-6/30/2017
	George M. DePolo	5/1/2008-4/30/2014
	Paul F. Gluchowski	7/1/2011-6/30/2017
	Janice Justina Wellington	7/1/2008-6/30/2014

**TOTAL
JUDGES**

112

Table 37 (Continued)

J&DR District Court Judges Leaving the Bench in 2011

	District	
Honorable Richard Y. AtLee Jr.	9	Elected to Circuit Court August 1, 2011
Honorable William R. Light	24	Died October 29, 2011

J&DR District Court Judges Taking the Bench in 2011

	District	
Honorable Shannon O. Hoehl	15	Effective July 1, 2011
Honorable Jonathan S. Lynn	20	Effective July 1, 2011

*Chief Judges of the Commonwealth of Virginia
As of December 31, 2011*

District		District	
1	Rufus A. Banks Jr.	16	Susan L. Whitlock
2	Randall M. Blow	17	George D. Varoutsos
2A	Croxton Gordon	18	Constance H. Frogale
3	William S. Moore Jr.	19	Thomas P. Mann
4	Michelle J. Atkins	20	Avelina S. Jacob
5	Robert S. Brewbaker Jr.	21	Susan N. Deatherage
6	Carson E. Saunders Jr.	22	Sarah A. Rice
7	Ronald Everett Bensten	23	Joseph M. Clarke II
8	Robert B. Wilson V	24	Michael T. Garrett
9	Isabel Hall AtLee	25	Anita D. Filson
10	Michael M. Rand	26	William H. Logan Jr.
11	Valentine W. Southall Jr.	27	H. Lee Chitwood
12	Bonnie C. Davis	28	Florence A. Powell
13	Ashley K. Tunner	29	Henry A. Barringer
14	Margaret W. Deglau	30	Elizabeth S. Wills
15	Gerald F. Daltan	31	Paul F. Gluchowski



2011 The Judiciary's Year in Review

Virginia
Magistrates

MAGISTRATE SYSTEM

Function and Structure

In many instances, a citizen’s first contact with Virginia’s Judicial System comes through the office of the Magistrate. A principal function of the magistrate is to provide an independent, unbiased review of complaints of criminal conduct brought to the office by law enforcement or the general public. Magistrate duties include issuing various types of processes such as arrest warrants, summonses, bonds, search warrants, subpoenas, and certain civil warrants. Magistrates also conduct bail hearings in instances in which an individual is arrested on a warrant charging him or her with a criminal offense. Magistrates provide services on an around-the-clock basis,

conducting hearings in person or through the use of video-conferencing systems.

The magistrate system for the Commonwealth is divided into eight regions, and each magistrate is authorized to exercise his or her powers throughout the magisterial region for which he or she is appointed. Each region is comprised of between three and five judicial districts. There are magistrate offices located throughout Virginia, including at least one in each of Virginia’s 32 judicial districts.

Display 15
Magistrate System
2011 Distribution of Processes

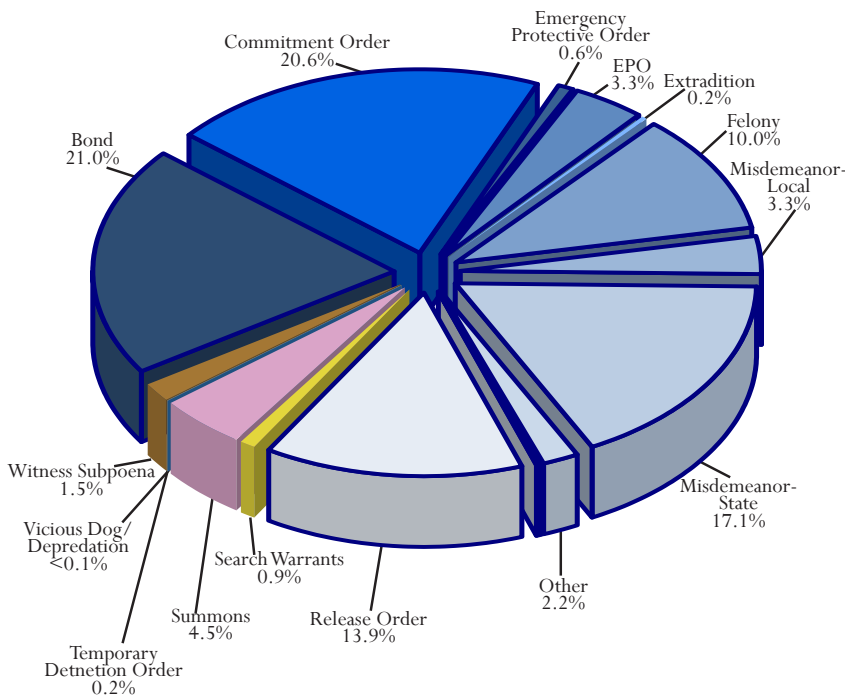


Table 38
Magistrate System
2011 Total Processes

Bond	214,361
Commitment Order	214,008
Emergency Protective Order	6,113
EPO	42,711
Extradition	2,382
Felony	112,395
Misdemeanor-Local	35,159
Misdemeanor-State	179,989
Other	22,798
Release Order	146,588
Search Warrants	9,943
Summons	47,526
TDO-Juvenile	1,758
Vicious Dog/Depredation	543
Witness Subpoena	16,670
Grand Total	1,052,944

Table 39
Magistrate System
 2011 Processes Issued by District

District	Probable Cause: Arrest Warrants, Summonses and Search Warrants	Bonds	Other Processes	Total Processes Issued
1	10,745	6,267	14,185	31,197
2	21,869	12,832	27,822	62,523
3	6,183	3,539	8,003	17,725
4	16,775	9,115	17,536	43,426
5	6,740	3,294	8,167	18,201
6	6,433	5,038	10,432	21,903
7	12,676	6,185	14,444	33,305
8	6,826	3,818	8,591	19,235
9	10,940	6,497	12,619	30,056
10	7,728	4,909	9,427	22,064
11	10,391	4,656	8,624	23,671
12	16,305	6,134	13,204	35,643
13	16,631	8,171	24,548	49,350
14	14,967	8,054	16,815	39,836
15	22,984	11,119	23,919	58,022
16	13,460	7,911	13,854	35,225
17	6,040	3,501	7,560	17,101
18	3,565	2,438	5,004	11,007
19	29,307	20,533	41,041	90,881
20	11,414	5,681	11,220	28,315
21	4,261	2,796	6,320	13,377
22	9,434	5,731	11,010	26,175
23	16,432	10,765	23,106	50,303
24	13,052	6,806	15,932	35,790
25	10,830	5,948	11,966	28,744
26	19,396	9,607	20,126	49,129
27	17,183	9,896	20,483	47,562
28	14,162	6,456	15,996	36,614
30	9,827	5,939	10,389	26,155
31	16,904	9,932	18,913	45,749
32	1,661	793	2,206	4,660
Total	385,121	214,361	453,462	1,052,944

Display 16

Magistrate System

2011 Processes Issued by District in Rank Order

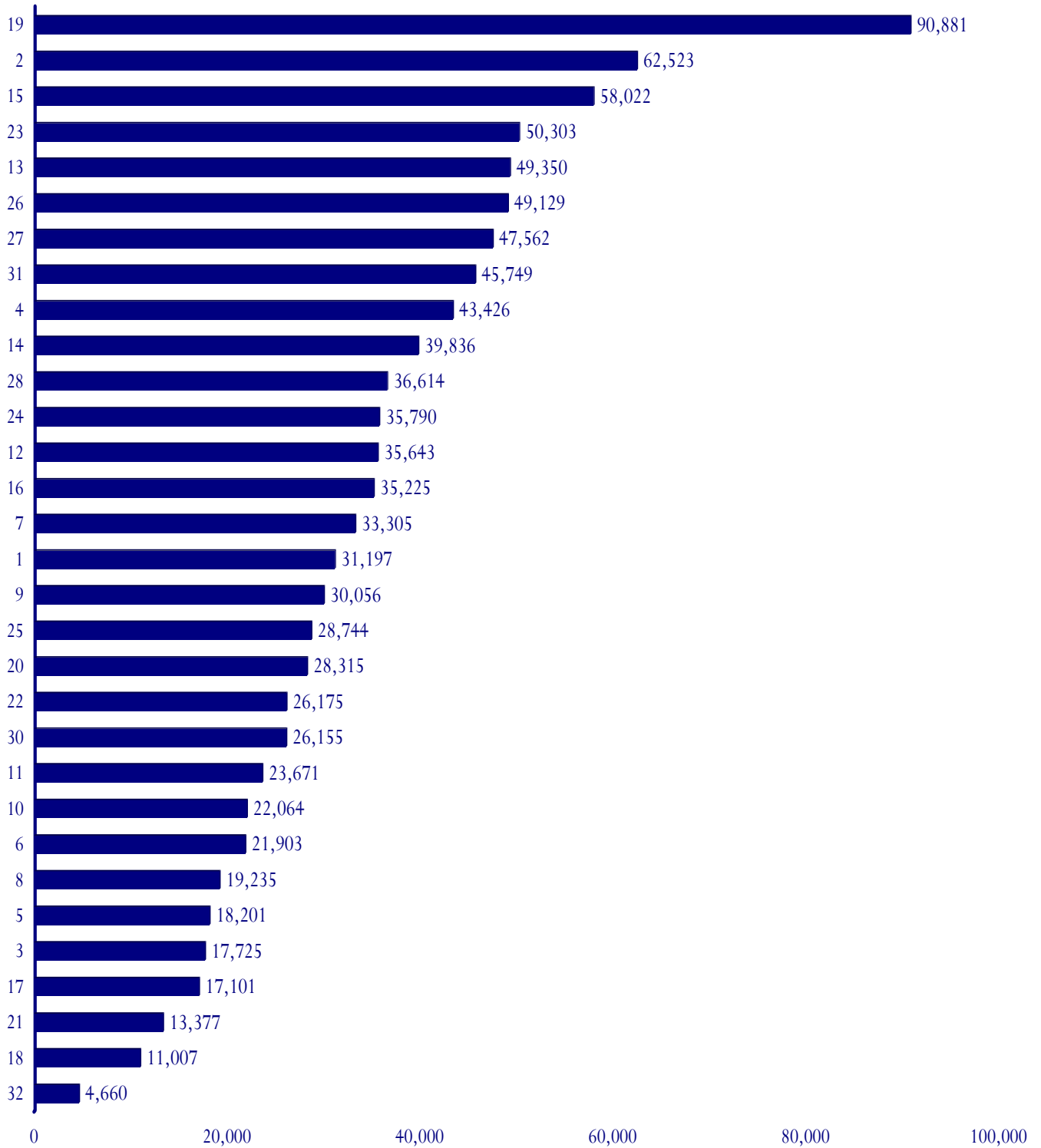


Table 40

Magistrate System

2011 Detailed Process Data by District

First Judicial District

Bond	6,267
Commitment Order	6,575
Emergency Protective Order	139
EPO	710
Extradition	45
Felony	3,667
Misdemeanor-Local	2,138
Misdemeanor-State	3,520
Other	584
Release Order	4,578
Search Warrants	40
Summons	1,396
TDO-Juvenile	25
Vicious Dog/Depredation	2
Witness Subpoena	1,511
Total	31,197

Fourth Judicial District

Bond	9,115
Commitment Order	10,364
Emergency Protective Order	31
EPO	2,769
Extradition	75
Felony	4,551
Misdemeanor-Local	2,527
Misdemeanor-State	7,002
Other	970
Release Order	2,345
Search Warrants	801
Summons	2,045
TDO-Juvenile	57
Vicious Dog/Depredation	5
Witness Subpoena	769
Total	43,426

Second Judicial District

Bond	12,832
Commitment Order	13,087
Emergency Protective Order	222
EPO	2,760
Extradition	104
Felony	5,449
Misdemeanor-Local	5,358
Misdemeanor-State	7,642
Other	1,530
Release Order	9,771
Search Warrants	416
Summons	3,045
TDO-Juvenile	103
Vicious Dog/Depredation	24
Witness Subpoena	180
Total	62,523

Fifth Judicial District

Bond	3,294
Commitment Order	3,832
Emergency Protective Order	329
EPO	580
Extradition	34
Felony	2,197
Misdemeanor-Local	779
Misdemeanor-State	2,835
Other	513
Release Order	2,813
Search Warrants	262
Summons	670
TDO-Juvenile	47
Vicious Dog/Depredation	11
Witness Subpoena	5
Total	18,201

Third Judicial District

Bond	3,539
Commitment Order	4,296
Emergency Protective Order	23
EPO	724
Extradition	28
Felony	1,881
Misdemeanor-Local	89
Misdemeanor-State	3,364
Other	581
Release Order	2,231
Search Warrants	118
Summons	769
TDO-Juvenile	22
Vicious Dog/Depredation	5
Witness Subpoena	55
Total	17,725

Sixth Judicial District

Bond	5,038
Commitment Order	4,539
Emergency Protective Order	93
EPO	714
Extradition	84
Felony	2,164
Misdemeanor-Local	184
Misdemeanor-State	3,328
Other	362
Release Order	4,177
Search Warrants	117
Summons	609
TDO-Juvenile	50
Vicious Dog/Depredation	7
Witness Subpoena	437
Total	21,903

M A G I S T R A T E S Y S T E M

Table 41 (Continued)

Seventh Judicial District

Bond	6,185
Commitment Order	7,216
Emergency Protective Order	167
EPO	1,758
Extradition	44
Felony	4,383
Misdemeanor-Local	2,377
Misdemeanor-State	4,028
Other	580
Release Order	4,565
Search Warrants	175
Summons	1,754
TDO-Juvenile	11
Vicious Dog/Depredation	13
Witness Subpoena	49
<hr/>	
<i>Total</i>	<i>33,305</i>

Eighth Judicial District

Bond	3,818
Commitment Order	3,905
Emergency Protective Order	66
EPO	825
Extradition	36
Felony	2,521
Misdemeanor-Local	1,263
Misdemeanor-State	1,479
Other	568
Release Order	2,843
Search Warrants	15
Summons	1,549
TDO-Juvenile	11
Vicious Dog/Depredation	7
Witness Subpoena	329
<hr/>	
<i>Total</i>	<i>19,235</i>

Ninth Judicial District

Bond	6,497
Commitment Order	5,707
Emergency Protective Order	80
EPO	1,277
Extradition	49
Felony	3,026
Misdemeanor-Local	252
Misdemeanor-State	5,585
Other	427
Release Order	4,750
Search Warrants	321
Summons	1,778
TDO-Juvenile	43
Vicious Dog/Depredation	18
Witness Subpoena	246
<hr/>	
<i>Total</i>	<i>30,056</i>

Tenth Judicial District

Bond	4,909
Commitment Order	3,626
Emergency Protective Order	241
EPO	970
Extradition	40
Felony	1,900
Misdemeanor-Local	9
Misdemeanor-State	4,556
Other	482
Release Order	2,733
Search Warrants	309
Summons	949
TDO-Juvenile	38
Vicious Dog/Depredation	13
Witness Subpoena	1,289
<hr/>	
<i>Total</i>	<i>22,064</i>

Eleventh Judicial District

Bond	4,656
Commitment Order	4,457
Emergency Protective Order	156
EPO	942
Extradition	40
Felony	3,886
Misdemeanor-Local	643
Misdemeanor-State	4,628
Other	645
Release Order	2,059
Search Warrants	306
Summons	876
TDO-Juvenile	85
Vicious Dog/Depredation	8
Witness Subpoena	284
<hr/>	
<i>Total</i>	<i>23,671</i>

Twelfth Judicial District

Bond	6,134
Commitment Order	6,371
Emergency Protective Order	100
EPO	1,218
Extradition	40
Felony	4,127
Misdemeanor-Local	300
Misdemeanor-State	6,914
Other	499
Release Order	4,138
Search Warrants	324
Summons	4,535
TDO-Juvenile	39
Vicious Dog/Depredation	11
Witness Subpoena	893
<hr/>	
<i>Total</i>	<i>35,643</i>

Table 41 (Continued)

Thirteenth Judicial District

Bond	8,171
Commitment Order	12,160
Emergency Protective Order	368
EPO	1,941
Extradition	61
Felony	5,640
Misdemeanor-Local	67
Misdemeanor-State	9,500
Other	1,668
Release Order	8,137
Search Warrants	809
Summons	614
TDO-Juvenile	134
Vicious Dog/Depredation	10
Witness Subpoena	70
<i>Total</i>	<i>49,350</i>

Fourteenth Judicial District

Bond	8,054
Commitment Order	8,160
Emergency Protective Order	9
EPO	1,547
Extradition	66
Felony	5,117
Misdemeanor-Local	1,570
Misdemeanor-State	6,722
Other	779
Release Order	5,899
Search Warrants	598
Summons	962
TDO-Juvenile	62
Vicious Dog/Depredation	6
Witness Subpoena	285
<i>Total</i>	<i>39,836</i>

Fifteenth Judicial District

Bond	11,119
Commitment Order	11,824
Emergency Protective Order	273
EPO	2,526
Extradition	160
Felony	7,806
Misdemeanor-Local	1,109
Misdemeanor-State	11,322
Other	1,014
Release Order	7,505
Search Warrants	465
Summons	2,267
TDO-Juvenile	90
Vicious Dog/Depredation	48
Witness Subpoena	494
<i>Total</i>	<i>58,022</i>

Sixteenth Judicial District

Bond	7,911
Commitment Order	6,383
Emergency Protective Order	259
EPO	1,810
Extradition	50
Felony	3,403
Misdemeanor-Local	81
Misdemeanor-State	7,991
Other	561
Release Order	4,586
Search Warrants	530
Summons	1,433
TDO-Juvenile	65
Vicious Dog/Depredation	36
Witness Subpoena	126
<i>Total</i>	<i>35,225</i>

Seventeenth Judicial District

Bond	3,501
Commitment Order	3,843
Emergency Protective Order	65
EPO	401
Extradition	100
Felony	1,656
Misdemeanor-Local	628
Misdemeanor-State	3,135
Other	322
Release Order	2,665
Search Warrants	1
Summons	619
TDO-Juvenile	8
Vicious Dog/Depredation	0
Witness Subpoena	157
<i>Total</i>	<i>17,101</i>

Eighteenth Judicial District

Bond	2,438
Commitment Order	2,543
Emergency Protective Order	86
EPO	397
Extradition	53
Felony	1,134
Misdemeanor-Local	285
Misdemeanor-State	1,845
Other	319
Release Order	1,616
Search Warrants	1
Summons	273
TDO-Juvenile	15
Vicious Dog/Depredation	2
Witness Subpoena	0
<i>Total</i>	<i>11,007</i>

M A G I S T R A T E S Y S T E M

Table 41 (Continued)

Nineteenth Judicial District

Bond	20,533
Commitment Order	21,597
Emergency Protective Order	39
EPO	2,131
Extradition	211
Felony	8,877
Misdemeanor-Local	8,386
Misdemeanor-State	9,425
Other	781
Release Order	15,347
Search Warrants	889
Summons	1,794
TDO-Juvenile	73
Vicious Dog/Depredation	18
Witness Subpoena	780
<hr/>	
<i>Total</i>	<i>90,881</i>

Twentieth Judicial District

Bond	5,681
Commitment Order	5,435
Emergency Protective Order	119
EPO	989
Extradition	112
Felony	2,695
Misdemeanor-Local	1,498
Misdemeanor-State	4,624
Other	420
Release Order	4,039
Search Warrants	478
Summons	2,095
TDO-Juvenile	36
Vicious Dog/Depredation	67
Witness Subpoena	27
<hr/>	
<i>Total</i>	<i>28,315</i>

Twenty-first Judicial District

Bond	2,796
Commitment Order	2,949
Emergency Protective Order	190
EPO	688
Extradition	32
Felony	1,102
Misdemeanor-Local	519
Misdemeanor-State	2,235
Other	281
Release Order	1,956
Search Warrants	141
Summons	264
TDO-Juvenile	16
Vicious Dog/Depredation	7
Witness Subpoena	201
<hr/>	
<i>Total</i>	<i>13,377</i>

Twenty-second Judicial District

Bond	5,731
Commitment Order	5,307
Emergency Protective Order	298
EPO	972
Extradition	54
Felony	2,285
Misdemeanor-Local	852
Misdemeanor-State	5,013
Other	775
Release Order	3,524
Search Warrants	268
Summons	1,015
TDO-Juvenile	40
Vicious Dog/Depredation	30
Witness Subpoena	11
<hr/>	
<i>Total</i>	<i>26,175</i>

Twenty-third Judicial District

Bond	10,765
Commitment Order	9,651
Emergency Protective Order	415
EPO	2,374
Extradition	85
Felony	3,893
Misdemeanor-Local	86
Misdemeanor-State	9,568
Other	1,246
Release Order	6,863
Search Warrants	92
Summons	2,841
TDO-Juvenile	73
Vicious Dog/Depredation	60
Witness Subpoena	2,291
<hr/>	
<i>Total</i>	<i>50,303</i>

Twenty-fourth Judicial District

Bond	6,806
Commitment Order	5,943
Emergency Protective Order	488
EPO	2,000
Extradition	43
Felony	3,550
Misdemeanor-Local	699
Misdemeanor-State	6,926
Other	1,306
Release Order	3,998
Search Warrants	404
Summons	1,453
TDO-Juvenile	127
Vicious Dog/Depredation	12
Witness Subpoena	2,035
<hr/>	
<i>Total</i>	<i>35,790</i>

Table 41 (Continued)

Twenty-fifth Judicial District

Bond	5,948
Commitment Order	5,101
Emergency Protective Order	297
EPO	1,490
Extradition	48
Felony	2,857
Misdemeanor-Local	141
Misdemeanor-State	6,447
Other	663
Release Order	3,708
Search Warrants	310
Summons	1,054
TDO-Juvenile	81
Vicious Dog/Depredation	33
Witness Subpoena	566
<i>Total</i>	<i>28,744</i>

Twenty-sixth Judicial District

Bond	9,607
Commitment Order	9,448
Emergency Protective Order	237
EPO	1,991
Extradition	185
Felony	4,885
Misdemeanor-Local	1,688
Misdemeanor-State	8,414
Other	859
Release Order	7,289
Search Warrants	550
Summons	3,683
TDO-Juvenile	61
Vicious Dog/Depredation	39
Witness Subpoena	193
<i>Total</i>	<i>49,129</i>

Twenty-seventh Judicial District

Bond	9,896
Commitment Order	8,848
Emergency Protective Order	316
EPO	1,704
Extradition	88
Felony	4,208
Misdemeanor-Local	210
Misdemeanor-State	9,204
Other	1,729
Release Order	7,396
Search Warrants	557
Summons	2,980
TDO-Juvenile	219
Vicious Dog/Depredation	7
Witness Subpoena	200
<i>Total</i>	<i>47,562</i>

Twenty-eighth Judicial District

Bond	6,456
Commitment Order	6,837
Emergency Protective Order	407
EPO	1,626
Extradition	186
Felony	4,959
Misdemeanor-Local	241
Misdemeanor-State	7,195
Other	1,006
Release Order	4,235
Search Warrants	376
Summons	1,389
TDO-Juvenile	50
Vicious Dog/Depredation	9
Witness Subpoena	1,642
<i>Total</i>	<i>36,614</i>

Thirtieth Judicial District

Bond	5,939
Commitment Order	4,769
Emergency Protective Order	267
EPO	1,006
Extradition	96
Felony	2,912
Misdemeanor-Local	13
Misdemeanor-State	5,647
Other	505
Release Order	3,561
Search Warrants	199
Summons	1,049
TDO-Juvenile	10
Vicious Dog/Depredation	4
Witness Subpoena	178
<i>Total</i>	<i>26,155</i>

Thirty-first Judicial District

Bond	9,932
Commitment Order	8,559
Emergency Protective Order	272
EPO	1,528
Extradition	100
Felony	5,196
Misdemeanor-Local	1,167
Misdemeanor-State	8,982
Other	766
Release Order	6,804
Search Warrants	20
Summons	1,538
TDO-Juvenile	66
Vicious Dog/Depredation	28
Witness Subpoena	791
<i>Total</i>	<i>45,749</i>

Table 41 (Continued)

Judicial District Two-A

Bond	793
Commitment Order	676
Emergency Protective Order	61
EPO	343
Extradition	33
Felony	468
Misdemeanor-State	913
Other	57
Release Order	457
Search Warrants	51
Summons	228
TDO-Juvenile	1
Vicious Dog/Depredation	3
Witness Subpoena	576
<i>Total</i>	<i>4,660</i>

State Totals

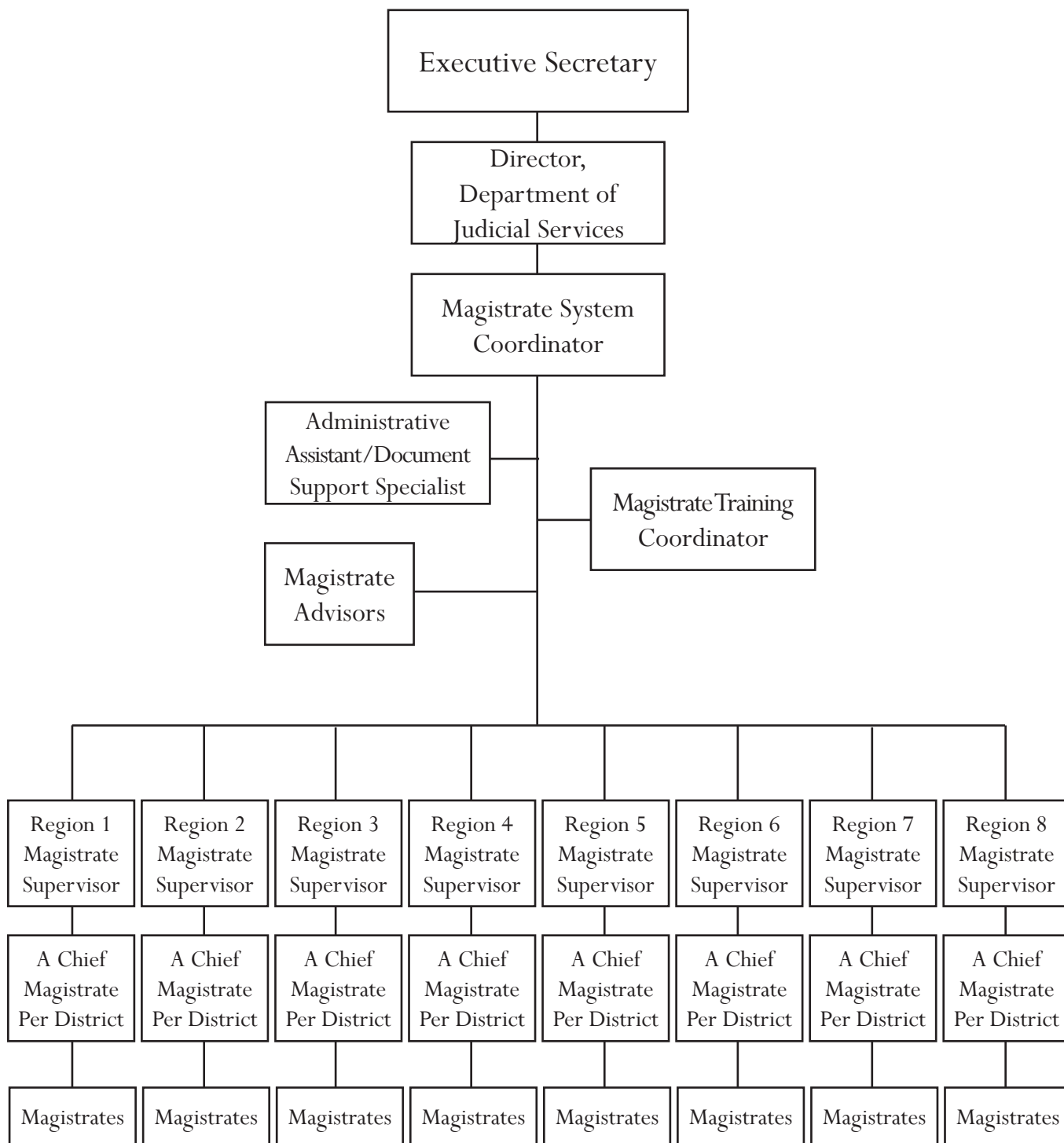
Bond	230,452
Commitment Order	225,980
Emergency Protective Order	6,334
EPO	35,700
Extradition	2,352
Felony	109,562
Misdemeanor-Local	43,108
Misdemeanor-State	186,993
Other	2,049
Release Order	152,673
Search Warrants	8,764
Summons	53,214
TDO-Juvenile	1,934
Temporary Detention Order	20,541
Vicious Dog/Depredation	522
Witness Subpoena	16,373
<i>Grand Total</i>	<i>1,096,551</i>

Display 17

Magistrate System

Organizational Chart

As of July 1, 2011



Display 18
Magistrate System
Map of Magistrate Regions

